

ServiceList 18.1

Implementation guide

- [Overview](#)
 - [Short Description](#)
 - [Current Scope](#)
 - [Out of scope](#)
 - [Sequence Diagram](#)
 - [Prime booking flow](#)
 - [Post-sale flow](#)
 - [Prerequisites](#)
- [Building a query: ServiceListRQ](#)
 - [Prime Booking Flow](#)
 - [Functional Description](#)
 - [Implementation](#)
 - [Version](#)
 - [Message Document](#)
 - [Point of sale](#)
 - [Party](#)
 - [CoreRequest](#)
 - [OriginDest](#)
 - [Paxs](#)
 - [Parameters](#)
 - [Preferences](#)
 - [FarePreferences](#)
 - [ServiceCriteria](#)
 - [Post Sale Flow](#)
 - [Functional Description](#)

- [Implementation](#)
 - [Version](#)
 - [Message Document](#)
 - [Party](#)
 - [Parameters](#)
 - [Paxs](#)
 - [CoreRequest](#)
 - [Preferences](#)
 - [OriginDest](#)
 - [Receiving a reply: ServiceListRS](#)
 - [Functional Description](#)
 - [Implementation](#)
 - [Message Document](#)
 - [Warnings](#)
 - [ShoppingResponseID](#)
 - [Services](#)
 - [Pack of services](#)
 - [DataLists](#)
 - [PaxList](#)
 - [PaxJourneyList](#)
 - [BaggageAllowanceList](#)
 - [PaxSegmentList](#)
 - [OriginDestList](#)
 - [SeatProfileList](#)
 - [ServiceDefinitionList](#)
 - [BookingInstructions](#)
 - [RuleMetadatas](#)
 - [DescriptionMetadatas](#)
 - [Errors](#)

- [Troubleshooting](#)
- [Detailed Use Cases](#)
 - [Prime booking flow - Catalog requested for the Offer full content](#)
 - [Use Case Description](#)
 - [Preconditions](#)
 - [Query](#)
 - [Reply](#)
 - [Prime booking flow - Catalog requested for a selection of passengers](#)
 - [Use Case Description](#)
 - [Preconditions](#)
 - [Query](#)
 - [Post-sale flow - Catalog requested \(from the OrderID\) for the PNR full content](#)
 - [Use Case Description](#)
 - [Preconditions](#)
 - [Query](#)
 - [Post-sale flow - Catalog requested \(from the OrderID\) for a selection of passengers](#)
 - [Use Case Description](#)
 - [Preconditions](#)
 - [Query](#)
 - [Post-sale flow - Catalog requested \(from the OrderID\) for a selection of flights](#)
 - [Use Case Description](#)
 - [Preconditions](#)
 - [Query](#)
 - [Post-sale flow - Catalog requested \(from the PNR Record Locator\) for the full PNR content](#)
 - [Use Case Description](#)
 - [Preconditions](#)
 - [Query](#)
 - [Catalog reply containing a pack of services](#)

- [Use Case Description](#)
 - [Query](#)
 - [Reply](#)
- [Prime booking flow - Catalog requested with CFS option \(Chargeable and Free Services\)](#)
 - [Use Case Description](#)
 - [Query](#)
 - [Reply](#)
- [Catalog reply containing an error](#)
 - [Use Case Description](#)
 - [Reply](#)
- [Catalog reply containing a warning](#)
 - [Use Case Description](#)
 - [Reply](#)
- [Legal disclaimer](#)

Overview

The function is used to request a catalogue of Ancillary Services.

Short Description

The ServiceList request allows the user to retrieve the catalogue of ancillary services related to his flight(s), either during the prime booking flow or after the ticket issuance (post-sale flow).

Current Scope

The verb supports a catalog request from:

- an offer ID (prime booking flow)
- an order ID (post-sale flow)
- a PNR (post-sale flow).

Are considered in the scope of the current release:

- service types F (flight related), P (prepaid baggage), C (extra baggage charges), M (standalone services)
- seats: the presence of seats in ServiceList must be driven by a parameter (tbd) that can be switched on/off: if the client uses SeatAvailabilityRQ/RS, seats should not be proposed in ServiceListRS
- upgrade
- pack of services
- all fare types (public, private, nego, uni)
- currency override
- return free standard services

Out of scope

The verb does not support a catalogue request from:

- an e-ticket number

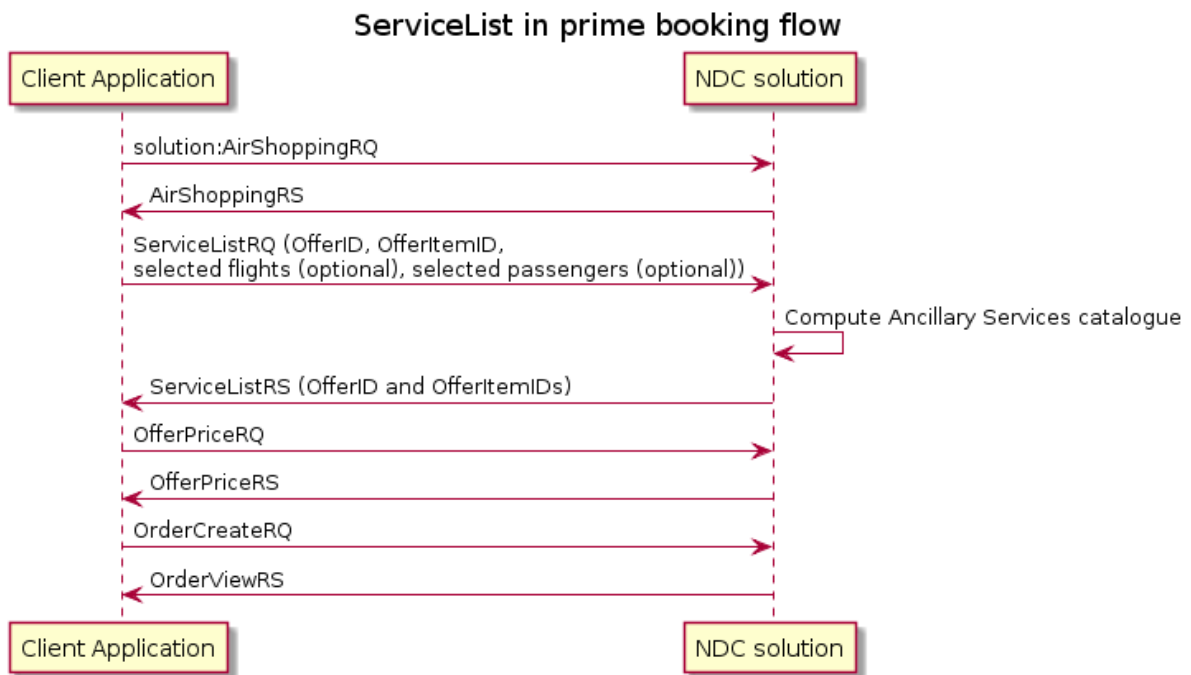
The following features are not supported:

- baggage allowance description (checked and carry-on)
- service type F, P or C with a weight range (not supported by XSD)
- EMD characteristics (not supported by the XSD)
- catalog with quota
- catalog in miles
- UCI DID reference and specific DCS flow
- FQTV in input
- Operating PNR
- Bounds definition in input
- Open segments
- Filter by service classification (not supported by the XSD).

Sequence Diagram

Prime booking flow

This refers to the case in which the ServiceListRQ is received after a successful AirShoppingRQ/RS (and potentially a OfferPriceRQ/RS). In this case the ServiceListRQ takes in input one of the OfferIDs (and the mandatory OfferItemID containing the flights) returned in AirShoppingRS.

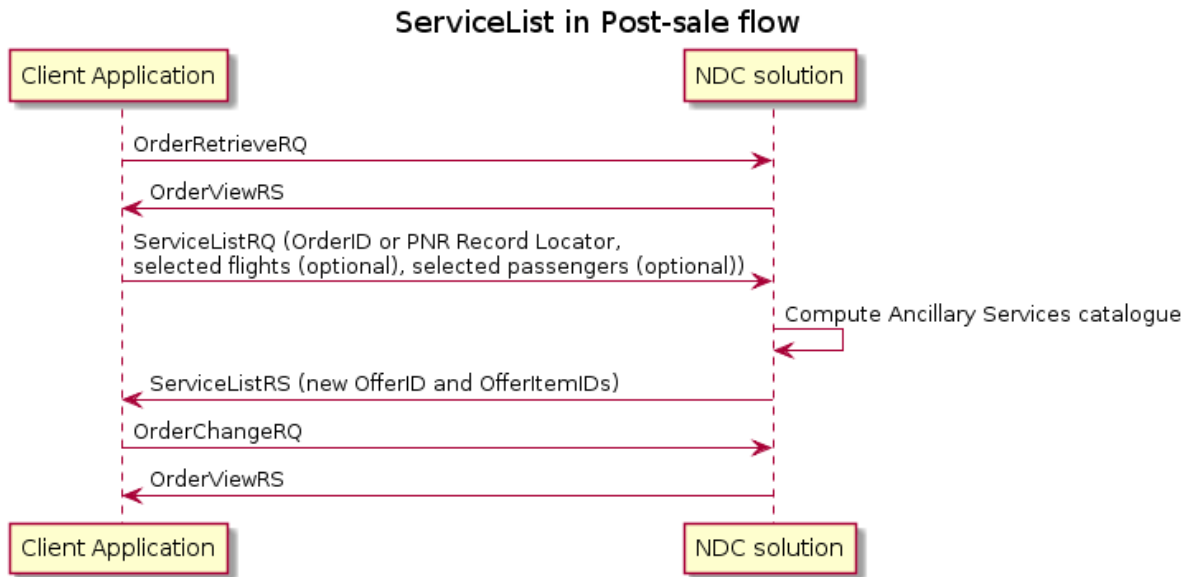


Note: OfferPriceRQ/RS is mandatory in this flow, but it can be performed before or after the ServiceList call.

Post-sale flow

This refers to the case in which the catalogue of services is requested after the issuance of the tickets. In this case the ServiceListRQ takes in input either the PNR reoloc or the OrderID.

An OrderRetrieveRQ is needed before the ServiceListRQ/RS.



Prerequisites

The airline for which the catalogue of services is requested is AAAS user.

Building a query: ServiceListRQ

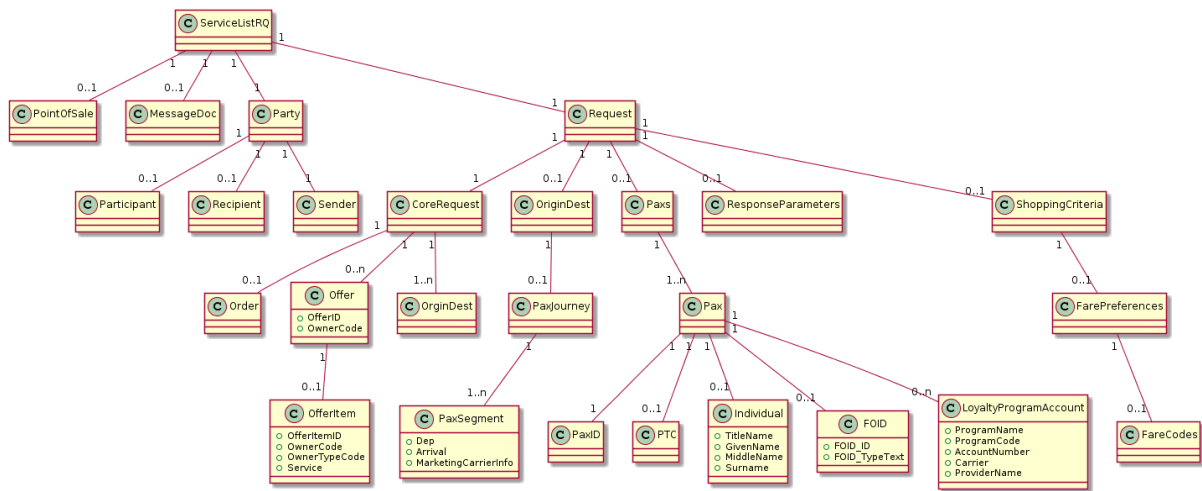
Prime Booking Flow

Functional Description

In prime booking flow, the query is composed of:

- the offer ID and offer item ID which contain the flights
- If applicable a list of passengers to which the catalog will apply (catalogue request with passenger selection)
- If applicable a list of flights to which the catalog will apply (catalogue request with flight selection).

Class diagram describing the *ServiceListRQ* xml in a prime booking flow:



Implementation

This section describes the implementation of the input message based on the NDC schema version 18.1.

Version

Designation	Repetition	Status	Location	Comments
Message version	1	M	/ServiceListRQ/PayloadAttributes/Version	Set to the NDC schema version to which the message complies to.

Example:

```
<ServiceListRQ>
  <PayloadAttributes>
    <Version>3.0</Version>
  </PayloadAttributes>
</ServiceListRQ>
```

Message Document

NDC Message Document information. The element should be sent empty; any additional content that is supported by the XSD and is sent in the query will be ignored by the process.

Designation	Repetition	Status	Location	Comments
Message description	1	O	/ServiceListRQ/MessageDoc	Mandatory in 16.1, optional in 18.1

Example:

<MessageDoc/>

Point of sale

This part is described in Agency Handling implementation guide.

Party

NDC Message/ Transaction Party(s) information. This part is described in Agency Handling implementation guide.

CoreRequest

Core Flight Pricing query parameters.

In prime booking flow, the offer ID and offer item ID are given in input.

At least one offer item ID is mandatory in the XSD but not needed for the process. The value will be ignored.

Designation	Repetition	Status	Location	Comments
OfferID	1	M	ServiceListRQ/Request/CoreRequest/Offer/OfferID	The unique ID of the offer on which the catalogue will be based
OwnerCode	1	O	ServiceListRQ/Request/CoreRequest/Offer/OwnerCode	Airline code assigned to a carrier
OfferItemID	1..n	M	ServiceListRQ/Request/CoreRequest/Offer/OfferItem/OfferItemID	Carrier assigned ID which exists uniquely within an Offer.
Service	1..n	M	ServiceListRQ/Request/CoreRequest/Offer/OfferItem/Service	Instance of a specific flight or Service Definition as it has been offered (and eventually ordered and consumed) in the context of a specific Offer and/or Order
ServiceID	1	M	ServiceListRQ/Request/CoreRequest/Offer/OfferItem/Service/ServiceID	Uniquely identifies a Service within the context of one message

Example:

```

<CoreRequest>
  <Offer>
    <OfferID>SULG-15932374674027125525-8</OfferID>
    <OwnerCode>6X</OwnerCode>
    <OfferItem>
      <OfferItemID>SULG-15932374674027125525-8-1</OfferItemID>
      <Service>
        <ServiceID>1</ServiceID>
      </Service>
    </OfferItem>
  </Offer>
</CoreRequest>

```

OriginDest

If the catalogue is not requested on the full itinerary, the list of selected flights for which the catalogue of ancillary services is requested must be reported in ServiceListRQ/Request/OriginDest element.

Designation	Repetition	Status	Location	Comments
Departure airport	1	M	ServiceListRQ/Request/OriginDest/OriginStationCode	Departure airport for the group of flights under PaxJourney.
Arrival airport	1	M	ServiceListRQ/Request/OriginDest/DestinationStationCode	Arrival airport for the group of flights under PaxJourney.
PaxSegmentID	1	M	ServiceListRQ/Request/OriginDest/PaxJourney/PaxSegment/PaxSegmentID	Unique flight ID.
Departure airport	1	M	ServiceListRQ/Request/OriginDest/PaxJourney/PaxSegment/Dep	The action or process of leaving of a transport vehicle from any place or location.
Departure date/time	1	O	ServiceListRQ/Request/OriginDest/PaxJourney/PaxSegment/Dep/AircraftScheduledDateTime	The Scheduled Date and Time of Departure of the aircraft at the terminal or departure gate at an airport. Example: 2017-10-12T10:25:00
Arrival airport	1	M	ServiceListRQ/Request/OriginDest/PaxJourney/PaxSegment/Arrival	The action or process of arriving of a transport vehicle in any place or location.

Designation	Repetition	Status	Location	Comments
Arrival date/time	1	O	ServiceListRQ/Request/OriginDest/PaxJourney/PaxSegment/Arrival/AircraftScheduledDateTime	The Scheduled Date and Time of Arrival of the aircraft at the terminal or departure gate at an airport. Example: 2017-10-14T10:25:00
Marketing carrier	1	M	ServiceListRQ/Request/OriginDest/PaxJourney/PaxSegment/MarketingCarrierInfo/CarrierDesigCode	Airline code assigned to a carrier.
Flight number	1	M	ServiceListRQ/Request/OriginDest/PaxJourney/PaxSegment/MarketingCarrierInfo/MarketingCarrierFlightNumberText	The numerical designation of a flight as it is marketed by a carrier.
Operating carrier	1	O	ServiceListRQ/Request/OriginDest/PaxJourney/PaxSegment/OperatingCarrierInfo/CarrierDesigCode	Airline code assigned to a carrier.
Flight number	1	O	ServiceListRQ/Request/OriginDest/PaxJourney/PaxSegment/OperatingCarrierInfo/OperatingCarrierFlightNumberText	Used to distinguish two flights having the same flight number and departing from their respective Origin Stations on the same date.

Note: if the flight information given in the request don't match the flight information present in the offer for the same SegmentKey, an error will be returned.

Example:

```

<OriginDest>
  <OriginStationCode>CDG</OriginStationCode>
  <DestStationCode>NCE</DestStationCode>
  <PaxJourney>
    <PaxSegment>
      <PaxSegmentID>SEG12</PaxSegmentID>
      <Dep/>
      <Arrival/>
      <MarketingCarrierInfo>
        <CarrierDesigCode>6X</CarrierDesigCode>

      <MarketingCarrierFlightNumberText>705</MarketingCarrierFlightNumberText>
      </MarketingCarrierInfo>
    </PaxSegment>
  </PaxJourney>
</OriginDest>

```

Paxs

Traveler information. Not needed if the catalogue is requested for all the passengers present in the offer.

Up to 9 travelers occupying a seat and 9 infants in lap can be defined.

Only the "Surname" of the passenger is required for a ServiceList from Order. It will be used for the matching between the passengers from the request and the one in the order. If provided, the matching will be extended to the following elements:

- Given name
- PTC
- Date of birth.

Frequent Traveler information is taken from the offer or the order, so any frequent flyer information sent in input will be ignored.

Designation	Repetition	Status	Location	Comments
PaxID	1	M	ServiceListRQ/Request/Paxs/Pax/PaxID	Unique passenger ID. Ex: 1, 2, ..
PTC	1	O	ServiceListRQ/Request/Paxs/Pax/PTC	Describes the type of the passenger. Possible values are: ADT, CHD, INF. If present in the query, it must match, for each passenger ID, the PTC previously returned in <i>AirShoppingRS</i> . The value of the Quantity attribute is ignored.
PassengerAssociation	1	O	TBD	Associates an infant in lap to an adult passenger. This information is not used at this stage of the NDC flow.
Surname	1	O/M	ServiceListRQ/Request/Paxs/Pax/Individual/Surname	Passenger's family name. The information is not used to price the offer. Optional in Prime Booking Flow, Mandatory in post-sale flow and must match the pax surname from the order.
GivenName	0..5	O	ServiceListRQ/Request/Paxs/Pax/Individual/GivenName	A personal name given to the individual at birth and used before a family name. Also called first name. E.g. JOHN.

Designation	Repetition	Status	Location	Comments
Birthdate	1	0	ServiceListRQ/Request/Paxs/Pax/Individual/Birthdate	The date on which an individual was born.
- Ignored - Frequent Flyer Company Code	1..n	0	ServiceListRQ/Request/Paxs/Pax/LoyaltyProgramAccount/Carrier/AirlineDesignCode	The 2-letters code of the Airline sponsoring the FQTV program
- Ignored - Frequent Flyer Card Number	1..n	0	ServiceListRQ/Request/Paxs/Pax/LoyaltyProgramAccount/AccountNumber	The number identifying the FQTV account

Example:

```

<Paxs>
  <Pax>
    <PaxID>PAX1</PaxID>
    <PTC>ADT</PTC>
    <Individual>
      <Surname>John</Surname>
    </Individual>
  </Pax>
</Paxs>

```

Important note: it is not possible to request a catalogue of services for an infant only. If "Travelers" element contains only one passenger whose PTC is INF, ServiceListRS will return the catalogue of services for both the infant and the adult he is associated with.

Parameters

Parameters that influence overall message results. Supported elements are:

- Pricing/OverrideCurrency

Designation	Repetition	Status	Location	Comments
OverrideCurCode	1	0	ServiceListRQ/Request/ResponseParameters/PricingParameter/OverrideCurCode	Currency code to be applied during process, such as USD, EUR, etc.

Example:

```

<ResponseParameters>
  <PricingParameter>
    <OverrideCurCode>USD</OverrideCurCode>
  </PricingParameter>
</ResponseParameters>

```

Preferences

FarePreferences

FarePreferences element is used to convey fare information: Fare Type, Fare Basis Code, Ticket Designator.

The fare information are not mandatory. The query can be sent without any fare information or with fare information for every passenger/flight combination. If the fare information is associated to a passenger or a flight, the passenger must be listed in "Travelers" element and the flight in "Journey Data" element. See implementation examples in "Travelers" and "JourneyData" chapters.

Designation	Repetition	Status	Location	Comments
Fare type	1	O	ServiceListRQ/Request/S hoppingCriteria/FarePreferences/Types/Type	If not given in input, it is assumed the fare is public
Fare basis code	1	O	ServiceListRQ/Request/S hoppingCriteria/FarePreferences/FareCodes/Code/Code	if not given in input, the catalog is computed without fare data (functionality not supported by all the airlines)
Segment association	16	O	ServiceListRQ/Request/S hoppingCriteria/FarePreferences/FareCodes/Code/@refs	associations must be given in input if the Preference structure is used to convey fare information
Passenger association	18	O	ServiceListRQ/Request/S hoppingCriteria/FarePreferences/FareCodes/Code/@refs	associations must be given in input if the Preference structure is used to convey fare information

Example:

```

<ShoppingCriteria>
  <FarePreferences>
    <Types>
      <Type refs="PAX1 SEG1">
        <Code>RP</Code>
      </Type>
    </Types>
    <FareCodes>
      <Code refs="PAX1 SEG1">
        <Code>YIF</Code>
      </Code>
    </FareCodes>
  </FarePreferences>
</ShoppingCriteria>

```

ServiceCriteria

ServiceCriteria element is used to convey Free Service option. Following option is supported:

- CFS: Chargeable and Free Services. In this case, the catalog returns the free standard services in addition to the ancillary services catalog.

The Free Service option information is not mandatory. **In case no Free service option is received only the ancillary services catalog is returned.**

Designation	Repetition	Status	Location	Comments
Free Service Option	1	0	ServiceListRQ/Request/ShoppingCriteria/ServiceCriteria/PrefLevel/PrefContextText/	Possible values: <ul style="list-style-type: none"> • CFS: Chargeable and Free Services. In case no option is provided, only ancillary services (chargeable services) are returned.

Example:

```

<ShoppingCriteria>
  <ServiceCriteria>
    <PrefLevel>
      <PrefContextText>CFS</PrefContextText>
    </PrefLevel>
  </ServiceCriteria>
</ShoppingCriteria>

```


Post Sale Flow

In post sale flow, the query is composed of:

- the order ID or PNR Record Locator

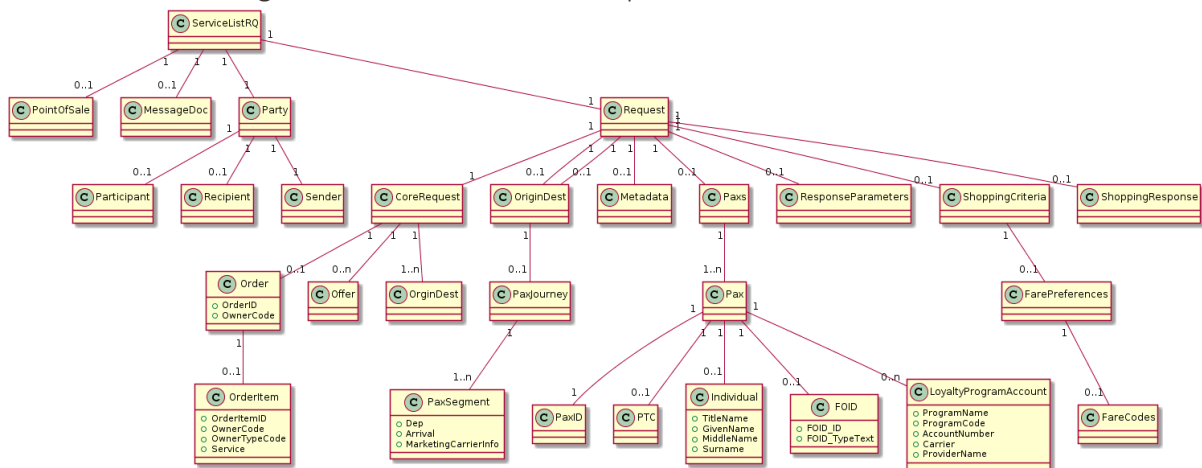
If both are sent in the request, the booking reference has a higher priority and is used to retrieve the order.

- If applicable a list of passengers in the PNR to which the catalog will apply
- If applicable a list of flights in the PNR to which the catalog will apply.

If no passenger or flight is specified in the query, the catalog will be based on the full PNR content.

Functional Description

Here is the class diagram of the ServiceListRQ in post-sale flow:



Implementation

Version

Same implementation as in prime booking flow.

Message Document

Same implementation as in prime booking flow.

Party

Same implementation as in prime booking flow.

Parameters

Same implementation as in prime booking flow.

Paxs

Traveler information. Not needed if the catalogue is requested for all the passengers present in the PNR. See requested data for a Recognized Traveler in [\[5\]](#).

CoreRequest

Core Flight Pricing query parameters.

In post-sale flow, The "Query" element is used to convey the **OrderID** or the **PNR Record Locator** (Query/OrderID element).

Designation	Repetition	Status	Location	Comments
OrderID	1	M	ServiceListRQ/Request/CoreRequest/Order	The unique ID of the order on which the catalogue will be based, or the PNR Record Locator
Owner	1	M	ServiceListRQ/Request/CoreRequest/Order/Owner Code	The airline owner of the order, or the system that owns the Recloc

Example with an OrderID:

```
<CoreRequest>
  <Order>
    <OrderID>6X_P4MLIZ</OrderID>
    <OwnerCode>6X</OwnerCode>
  </Order>
</CoreRequest>
```

Example with a PNR Record Locator:

```
<CoreRequest>
  <Order>
    <OrderID>P4MLIZ</OrderID>
    <OwnerCode>1A</OwnerCode>
  </Order>
</CoreRequest>
```

Preferences

Same implementation as in prime booking flow.

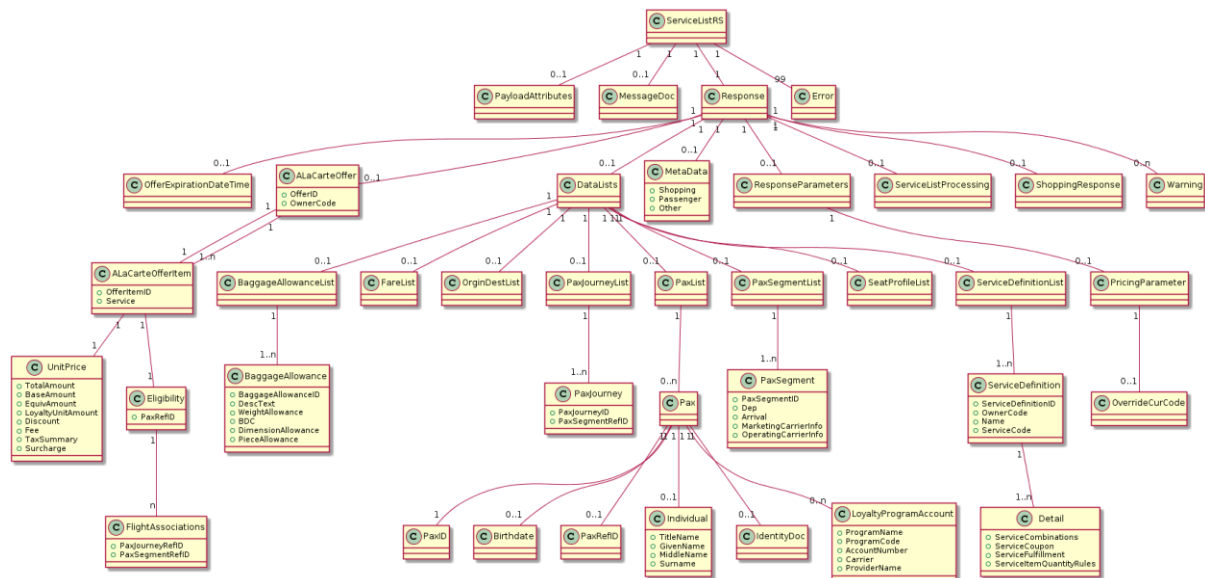
OriginDest

Same implementation as in prime booking flow.

Receiving a reply: ServiceListRS

Functional Description

Class diagram describing the *ServiceListRS* xml:



Implementation

Message Document

Empty element (optional)

Example:

```
<MessageDoc />
```

Warnings

Used to convey warning messages in success cases.

Designation	Repetition	Status	Location	Comments
Warning	1	M	ServiceListRS/Response/Warning/DescText	Freetext
Code	1	O	ServiceListRS/Response/Warning/Code	Numeric code

Example:

```
<Response>
  <Warning>
    <DescText>SERVICE PRICES MAY CHANGE BASED ON TICKET FARE
  DATA</DescText>
  </Warning>
</Response>
```

ShoppingResponseID

Used to convey the response ID.

Designation	Repetition	Status	Location	Comments
ObjectKey	1	M	Response/ShoppingResponse/ResponseID	Unique Response ID

Example:

```
<Response>
  <ShoppingResponse>
    <ResponseID>SULP-7798176086664747258</ResponseID>
  </ShoppingResponse>
</Response>
```

Services

List of data returned for each service.

Designation	Repetition	Status	Location	Comments
OfferID	1	M	ServiceListRS/Response/ALaCarteOffer/OfferID	Unique offer ID. Ex: SULP-3580145741757623292-1

Designation	Repetition	Status	Location	Comments
OwnerCode	1	M	ServiceListRS/Response/ALaCarteOffer/OwnerCode	Airline code assigned to a carrier
OfferItemID	1	M	ServiceListRS/Response/ALaCarteOffer/ALaCarteOfferItem/OfferItemID	Unique offer item ID. Ex: SULP-3580145741757623292-1-1
Service ID	1	M	ServiceListRS/Response/ALaCarteOffer/ALaCarteOfferItem/Service/ServiceID	Service Item ID. Always with value 1
Total Amount	1	O	ServiceListRS/Response/ALaCarteOffer/ALaCarteOfferItem/UnitPrice/TotalAmount	Total price (including taxes if any) Free Services In case of Free Standard services, TotalAmount is set to 0, without any currency.
Total Price - Currency Code	1	O	ServiceListRS/Response/ALaCarteOffer/ALaCarteOfferItem/UnitPrice/TotalAmount/@CurCode	Currency code for the total amount, including all tax, surcharge and fee amounts
Base Amount	1	O	ServiceListRS/Response/ALaCarteOffer/ALaCarteOfferItem/UnitPrice/BaseAmount	Base Amount excluding taxes, fees, and surcharges.
Base Amount - Currency Code	1	O	ServiceListRS/Response/ALaCarteOffer/ALaCarteOfferItem/UnitPrice/BaseAmount/@CurCode	Currency code for base amount
Equiv Amount	1	O	ServiceListRS/Response/ALaCarteOffer/ALaCarteOfferItem/UnitPrice/EquivAmount	The entire amount of the transaction stated in the local currency at the point of sale, or the currency as defined by the @CurCode
Equiv Amount - Currency Code	1	O	ServiceListRS/Response/ALaCarteOffer/ALaCarteOfferItem/UnitPrice/EquivAmount/@CurCode	Currency code for equiv amount
Pre Discounted Amount	1	O	ServiceListRS/Response/ALaCarteOffer/ALaCarteOfferItem/UnitPrice/Discount/PreDiscountedAmount	Service amount before discount applied
Pre Discounted - Currency Code	1	O	ServiceListRS/Response/ALaCarteOffer/ALaCarteOfferItem/UnitPrice/Discount/PreDiscountedAmount/@CurCode	Currency code for discount applied

Designation	Repetition	Status	Location	Comments
			fferItem/UnitPrice/Discount/PreDiscountedAmount@CurCode	
Discounted Context	1	O	ServiceListRS/Response/ALaCarteOffer/ALaCarteOfferItem/UnitPrice/Discount/DiscountContext	Contextual information to further describe a particular discount by using a key-value pair
Key Word Text	1	O	ServiceListRS/Response/ALaCarteOffer/ALaCarteOfferItem/UnitPrice/Discount/DiscountContext/KeywordText	Key Word. Example: DID
Value Text	1	O	ServiceListRS/Response/ALaCarteOffer/ALaCarteOfferItem/UnitPrice/Discount/DiscountContext/ValueText	Key Word value. Reference to discount RuleMetadata key
Tax summary	1	O	ServiceListRS/Response/ALaCarteOffer/ALaCarteOfferItem/UnitPrice/TaxSummary/TotalTaxAmount	Total tax amount
Tax summary - Currency Code	1	O	ServiceListRS/Response/ALaCarteOffer/ALaCarteOfferItem/UnitPrice/TaxSummary/TotalTaxAmount@CurCode	Currency code for total tax amount
Tax breakdown	1	O	ServiceListRS/Response/ALaCarteOffer/ALaCarteOfferItem/UnitPrice/TaxSummary/Tax	Repetition is unique inside each Tax parent element
Service Definition ID	1	M	ServiceListRS/Response/ALaCarteOffer/ALaCarteOfferItem/Service/ServiceID	Service Definition ID
Service Ref ID	1	O	ServiceListRS/Response/ALaCarteOffer/ALaCarteOfferItem/Service/ServiceRefID	Reference to a Service ID within the message. Creates dependencies with parent services to which this particular Service is linked. Can reference Services across different Offer Items within the same Offer.

Designation	Repetition	Status	Location	Comments
Service Ref ID	1	M	ServiceListRS/Response/ALaCarteOfferItem/Service/ServiceDefinitionRefID	Reference to a Service Definition ID.
PaxRefID	1	O	ServiceListRS/Response/ALaCarteOfferItem/Eligibility/PaxRefID	Reference to the passenger who are eligible for this Offer item
PaxJourneyRefID	1	O	ServiceListRS/Response/ALaCarteOfferItem/Eligibility/FlightAssociations/PaxJourneyRefID	Reference to the journeys which this Offer item can be provided. Filled when more than one segment is referred.
PaxSegmentRefID	1	O	ServiceListRS/Response/ALaCarteOfferItem/Eligibility/FlightAssociations/PaxSegmentRefID	Reference to the flight segments on which this Offer item can be provided. Filled when only one segment is referred.

Example:

```

<ALaCarteOffer>
  <OfferID>SULP-3580145741757623292-1</OfferID>
  <OwnerCode>6X</OwnerCode>
  <ALaCarteOfferItem>
    <Service>
      <ServiceID>1</ServiceID>
      <ServiceDefinitionRefID>SRV1</ServiceDefinitionRefID>
    </Service>
    <Eligibility>
      <PaxRefID>PAX1</PaxRefID>
      <FlightAssociations>
        <PaxSegmentRefID>SEG1</PaxSegmentRefID>
      </FlightAssociations>
    </Eligibility>
    <OfferItemID>SULP-3580145741757623292-1-1</OfferItemID>
    <UnitPrice>
      <TotalAmount CurCode='EUR'>20</TotalAmount>
      <BaseAmount CurCode='EUR'>20</BaseAmount>
      <EquivAmount CurCode='EUR'>20</EquivAmount>
      <Discount>
        <PreDiscountedAmount>30</PreDiscountedAmount>
      </Discount>
    </UnitPrice>
  </ALaCarteOfferItem>
</ALaCarteOffer>

```

.....

```

<ServiceDefinitionList>
  <ServiceDefinition>
    <ServiceDefinitionID>SRV1</ServiceDefinitionID>
    <OwnerCode>6X</OwnerCode>
    <Name>PRE PAID BAGGAGE</Name>
    <ReasonForIssuanceCode>C</ReasonForIssuanceCode>
    <ServiceCode>XBAG</ServiceCode>
    <ReasonForIssuanceSubCode>0AA</ReasonForIssuanceSubCode>
    <Description>
      <DescID>1</DescID>
      <DescText>F</DescText>
      <MarkupStyleText>Service_Type</MarkupStyleText>
    </Description>
    <Description>
      <DescID>2</DescID>
      <DescText>01</DescText>
      <MarkupStyleText>BKM</MarkupStyleText>
    </Description>
    <Description>
      <DescID>3</DescID>
      <DescText>BG</DescText>
      <MarkupStyleText>Group</MarkupStyleText>
    </Description>
  </ServiceDefinition>

```



```

    </Description>
  </ServiceDefinition>
</ServiceDefinitionList>

```

Pack of services

Pack of services specific case:

The service definition of pack of services contains a reference to the subservices

Example:

```

<ns2:ServiceDefinition>
  <ns2:ServiceDefinitionID>SRV14</ns2:ServiceDefinitionID>
  <ns2:OwnerCode>6X</ns2:OwnerCode>
  <ns2:Name>PACKSEAT</ns2:Name>
  <ns2:ServiceCode>SNDC</ns2:ServiceCode>
  <ns2:ReasonForIssuanceCode>F</ns2:ReasonForIssuanceCode>
  <ns2:ReasonForIssuanceSubCode>CD5</ns2:ReasonForIssuanceSubCode>
  <ns2:Description>
    <ns2:DescID>1</ns2:DescID>
    <ns2:DescText>F</ns2:DescText>
    <ns2:MarkupStyleText>Service_Type</ns2:MarkupStyleText>
  </ns2:Description>
  <ns2:Description>
    <ns2:DescID>2</ns2:DescID>
    <ns2:DescText>01</ns2:DescText>
    <ns2:MarkupStyleText>BKM</ns2:MarkupStyleText>
  </ns2:Description>
  <ns2:Description>
    <ns2:DescID>3</ns2:DescID>
    <ns2:DescText>TS</ns2:DescText>
    <ns2:MarkupStyleText>Group</ns2:MarkupStyleText>
  </ns2:Description>
  <ns2:ServiceDefinitionAssociation>
    <ns2:ServiceBundle>
      <ns2:MaxQty>3</ns2:MaxQty>
      <ns2:ServiceDefinitionRefID>SRV14_1</ns2:ServiceDefinitionRefID>
      <ns2:ServiceDefinitionRefID>SRV14_2</ns2:ServiceDefinitionRefID>
      <ns2:ServiceDefinitionRefID>SRV14_3</ns2:ServiceDefinitionRefID>
    </ns2:ServiceBundle>
  </ns2:ServiceDefinitionAssociation>
</ns2:ServiceDefinition>

```

A sub-service included in a pack will be returned in ServiceListRS with an ObjectKey SRVx_y, SRVx being the ObjectKey of the service PACK.

A sub-service of a pack cannot be booked by itself. It contains no "ALaCarteOfferItem" element.

Example:

```
<ns2:ServiceDefinition>
  <ns2:ServiceDefinitionID>SRV14_1</ns2:ServiceDefinitionID>
  <ns2:OwnerCode>6X</ns2:OwnerCode>
  <ns2:Name>PACK SUB SERVICE</ns2:Name>
  <ns2:ServiceCode>LEGF</ns2:ServiceCode>
  <ns2:ReasonForIssuanceCode>A</ns2:ReasonForIssuanceCode>
  <ns2:ReasonForIssuanceSubCode>LEG</ns2:ReasonForIssuanceSubCode>
  <ns2:Description>
    <ns2:DescID>1</ns2:DescID>
    <ns2:DescText>01</ns2:DescText>
    <ns2:MarkupStyleText>BKM</ns2:MarkupStyleText>
  </ns2:Description>
</ns2:ServiceDefinition>
```

DataLists

PaxList

The list of passengers is returned in this element.

Designation	Repetition	Status	Location	Comments
PaxID	1	M	ServiceListRS/Response/DataLists/PaxList/Pax/PaxID	Unique passenger ID. Ex: 1, 2, ..
PTC	1	O	ServiceListRS/Response/DataLists/PaxList/Pax/PTC	Type code applying to the Passenger which typically drives pricing (e.g. ADT, CHD, etc).

Example:

```
<PaxList>
  <Pax>
    <PaxID>PAX1</PaxID>
    <PTC>ADT</PTC>
  </Pax>
</PaxList>
```

PaxJourneyList

The list of journeys is returned in this element.

Designation	Repetition	Status	Location	Comments
PaxJourneyID	1	O	ServiceListRS/Response/DataLists/PaxJourneyList/PaxJourney/PaxJourneyID	Unique passenger journey ID. Ex: 1, 2, ..
PaxSegmentRefID	1..N	M	ServiceListRS/Response/DataLists/PaxJourneyList/PaxJourney/PaxSegmentRefID	Reference to a Passenger Segment ID within this message.
Duration	1	O	ServiceListRS/Response/DataLists/PaxJourneyList/PaxJourney/Duration	Total journey time including the combined air time and connection times. In case of stopover, this may or may not include stopover durations.

Example:

```

<PaxJourneyList>
  <PaxJourney>
    <PaxJourneyID>FLT1</PaxJourneyID>
    <Duration>PT15H25M</Duration>
    <PaxSegmentRefID>SEG1</PaxSegmentRefID>
    <PaxSegmentRefID>SEG2</PaxSegmentRefID>
  </PaxJourney>
</PaxJourneyList>

```

BaggageAllowanceList

For service types P&C.

Designation	Repetition	Status	Location	Comments
BaggageAllowanceID	1	M	ServiceListRS/Response/DataLists/BaggageAllowanceList/BaggageAllowance/BaggageAllowanceID	Unique baggage allowance ID
Applicable Party	1	O	ServiceListRS/Response/DataLists/BaggageAllowanceList/BaggageAllowance/ApplicablePartyText	Baggage weight restriction application. Examples: Party, Traveler. Party applies to all Travelers.
Weight Allowance	0..N	O	ServiceListRS/Response/DataLists/BaggageAllowanceList/BaggageAllowance/WeightAllowance	Baggage weight allowance with application information.

Designation	Repetition	Status	Location	Comments
Weight Allowance	0..N	M	ServiceListRS/Response/DataLists/BaggageAllowanceList/BaggageAllowance/WeightAllowance/MaximumWeightMeasure	Maximum weight value and unit measure. Example: 50
Weight Allowance unit code	0..N	M	ServiceListRS/Response/DataLists/BaggageAllowanceList/BaggageAllowance/WeightAllowance/MaximumWeightMeasure/@UnitCode	Weight Allowance unit measure
Baggage Determining Carrier	1	O	ServiceListRS/Response/DataLists/BaggageAllowanceList/BaggageAllowance/BD C	Baggage Determining Carrier, analysis result, and reason information.
Dimension Allowance	0..N	O	ServiceListRS/Response/DataLists/BaggageAllowanceList/BaggageAllowance/DimensionAllowance	Baggage dimension allowance with application information
Piece Allowance	0..N	O	ServiceListRS/Response/DataLists/BaggageAllowanceList/BaggageAllowance/PieceAllowance	Defines the maximum number of each allowable baggage type.

The baggage allowance ListKey is referenced at service level in ServiceDefinitionAssociation/BaggageAllowanceRefID.

Example with a P policy concept service:

```

<DataLists>
  <BaggageAllowanceList>
    <BaggageAllowance>
      <BaggageAllowanceID>CBA1</BaggageAllowanceID>
      <PieceAllowance>
        <ApplicablePartyText>Traveler</ApplicablePartyText>
        <TotalQty>1</TotalQty>
        <PieceMeasurements Quantity="1"/>
      </PieceAllowance>
    </BaggageAllowance>
  </BaggageAllowanceList>
  ...
  <ServiceDefinitionList>
    <ServiceDefinition>
      ....
      <ServiceDefinitionAssociation>
        <BaggageAllowanceRefID>CBA1</BaggageAllowanceRefID>
      </ServiceDefinitionAssociation>
    </ServiceDefinition>
  </ServiceDefinitionList>
</DataLists>

```

```

<DataLists>
  <BaggageAllowanceList>
    <BaggageAllowance>
      <BaggageAllowanceID>CBA3</BaggageAllowanceID>
      <WeightAllowance>
        <MaximumWeightMeasure
UnitCode='Kilogram'>5</MaximumWeightMeasure>
      </WeightAllowance>
    </BaggageAllowance>
  </BaggageAllowanceList>
  ...
  <ServiceDefinitionList>
    <ServiceDefinition>
      ....
      <ServiceDefinitionAssociation>
        <BaggageAllowanceRefID>CBA3</BaggageAllowanceRefID>
      </ServiceDefinitionAssociation>
    </ServiceDefinition>
  </ServiceDefinitionList>
</DataLists>

```

PaxSegmentList

The list of segments is returned in this element.

The same SegmentKey value is kept between query and reply to allow the calling application to associate them to the other elements.

Designation	Repetition	Status	Location	Comments
PaxSegmentID	1	M	ServiceListRS/Response/DataLists/PaxSegmentList/PaxSegment/PaxSegmentID	Unique ID of the segment. Ex: SEG1, SEG2, ..
Departure Airport Code	1	O	ServiceListRS/Response/DataLists/PaxSegmentList/PaxSegment/Dep/IATA_LocationCode	the 3-letters IATA code of the departure airport
Departure Date&Time	1	O	ServiceListRS/Response/DataLists/PaxSegmentList/PaxSegment/Dep/AircraftScheduledDateTime	Date and time of the departure. ex: 2018-01-24T10:25:00
Arrival Airport Code	1	O	ServiceListRS/Response/DataLists/PaxSegmentList/PaxSegment/Arrival/IATA_LocationCode	the 3-letters IATA code of the arrival airport
Arrival Date&Time	1	O	ServiceListRS/Response/DataLists/PaxSegmentList/PaxSegment/Arrival/AircraftScheduledDateTime	Date and time of the arrival. ex: 2018-01-24T10:25:00
Marketing Carrier	1	M	ServiceListRS/Response/DataLists/PaxSegmentList/PaxSegment/MarketingCarrierInfo/CarrierDesignCode	Airline code assigned to a carrier.
Marketing Class Of Service	1	O	ServiceListRS/Response/DataLists/PaxSegmentList/PaxSegment/MarketingCarrierInfo/RBD_Code	Booking class. Ex: P, J, W, M, Y...
Flight Number	1	M	ServiceListRS/Response/DataLists/PaxSegmentList/PaxSegment/MarketingCarrierInfo/MarketingCarrierFlightNumberText	The numerical designation of a flight as it is marketed by a carrier. Example: 1411
Carrier Name	1	M	ServiceListRS/Response/DataLists/PaxSegmentList/PaxSegment/MarketingCarrierInfo/CarrierName	Commercial name of the carrier. Example: FINAIR
Operating Carrier	1	O	ServiceListRS/Response/DataLists/PaxSegmentList/PaxSegment/MarketingCarrierInfo/OperatingCarrier	Airline code assigned to a carrier.

Designation	Repetition	Status	Location	Comments
			xSegment/OperatingCarrierInfo/CarrierDesigCode	
Class Of Service	1	O	ServiceListRS/Response/DataLists/PaxSegmentList/PaxSegment/OperatingCarrierInfo/RBD_Code	Booking class. Ex: P, J, W, M, Y...
Carrier Aircraft Type	1	M	ServiceListRS/Response/DataLists/PaxSegmentList/PaxSegment/DatedOperatingLeg/CarrierAircraftType	Element containing the described below data entities

Example:

```

<PaxSegmentList>
  <PaxSegment>
    <PaxSegmentID>SEG1</PaxSegmentID>
    <Dep>
      <IATA_LocationCode>FRA</IATA_LocationCode>
      <AircraftScheduleDateTime>2018-05-
10T17:10:00</AircraftScheduleDateTime>
    </Dep>
    <Arrival>
      <IATA_LocationCode>JFK</IATA_LocationCode>
      <AircraftScheduleDateTime>2018-05-
10T19:55:00</AircraftScheduleDateTime>
    </Arrival>
    <MarketingCarrierInfo>
      <CarrierDesigCode>6X</CarrierDesigCode>
      <CarrierName>DUMMY</CarrierName>

      <MarketingCarrierFlightNumberText>404</MarketingCarrierFlightNumberText>
      <RBD_Code>Y</RBD_Code>
    </MarketingCarrierInfo>
    <OperatingCarrierInfo>
      <CarrierDesigCode>6X</CarrierDesigCode>
    </OperatingCarrierInfo>
  </PaxSegment>
</PaxSegmentList>

```

OriginDestList

When applicable, the catalog returns the Baggage Travel Unit breakdown in this list.

Designation	Repetition	Status	Location	Comments
OriginDestID	1	O	ServiceListRS/Response/DataLists/OriginDestList/OriginDest/OriginDestID	Origin Destination ID
ArrivalStationCode	1	M	ServiceListRS/Response/DataLists/OriginDestList/OriginDest/ArrivalStationCode	IATA defined code identifying the city or station
DepStationCode	1	M	ServiceListRS/Response/DataLists/OriginDestList/OriginDest/DepStationCode	IATA defined code identifying the city or station
PaxJourneyRefID	1..N	O	ServiceListRS/Response/DataLists/OriginDestList/OriginDest/PaxJourneyRefID	Reference to Passenger Journey IDs within the message.

Example:

```

<OriginDestList>
  <OriginDest>
    <OriginDestID>FRAJFK</OriginDestID>
    <ArrivalStationCode>JFK</ArrivalStationCode>
    <DepStationCode>FRA</DepStationCode>
    <PaxJourneyRefID>JRN1-1</PaxJourneyRefID>
  </OriginDest>
</OriginDestList>

```

SeatProfileList

Designation	Repetition	Status	Location	Comments
SeatProfileID	1	M	ServiceListRS/Response/DataLists/SeatProfileList/SeatProfile/SeatProfileID	Seat Profile ID
CharacteristicCode	0..99	M	ServiceListRS/Response/DataLists/SeatProfileList/SeatProfile/CharacteristicCode	Seat characteristic/property code. Ex: CH


```

<DataList>
  <SeatProfileList>
    <SeatProfile>
      <SeatProfileID>SRV11</SeatProfileID>
      <CharacteristicCode>CH</CharacteristicCode>
    </SeatProfile>
  </SeatProfileList>
</DataList>

```

ServiceDefinitionList

List of data returned for each service.

Designation	Repetition	Status	Location	Comments
Service Definition	1	M	ServiceListRS/Response/DataLists/ServiceDefinitionList/ServiceDefinition	section to define Service
Service Definition ID	1	M	ServiceListRS/Response/DataLists/ServiceDefinitionList/ServiceDefinition/ServiceDefinitionID	Service Definition ID
Owner Code	1	O	ServiceListRS/Response/DataLists/ServiceDefinitionList/ServiceDefinition/OwnerCode	Airline code assigned to a carrier
Service Name	1	M	ServiceListRS/Response/DataLists/ServiceDefinitionList/ServiceDefinition/Name	Should be different than service description
Service Code	1	O	ServiceListRS/Response/DataLists/ServiceDefinitionList/ServiceDefinition/ServiceCode	Airline specific service code which can be associated with Reason for Issuance Sub Code. Example: XLEG for Extra Leg Room Seat, XBAG for Extra Bag
Reason for Issuance Code	1	O	ServiceListRS/Response/DataLists/ServiceDefinitionList/ServiceDefinition/ReasonForIssuanceCode	A (Air Transportation), C (Baggage), E (Airport Services), F (Merchandise), G (In-flight Services)
Service Description	1	M	ServiceListRS/Response/DataLists/ServiceDefinitionList/ServiceDefinition/Description	An account or representation of the certain or major aspects, characteristics or features of a person, object or event

Designation	Repetition	Status	Location	Comments
Service Description ID	1	M	ServiceListRS/Response/DataLists/ServiceDefinitionList/ServiceDefinition/Description/DescID	Unique identifier of the Description
Service Description Text	1	O	ServiceListRS/Response/DataLists/ServiceDefinitionList/ServiceDefinition/Description/DescText	Description text value corresponding to the MarkupStyleText.
Mark-up Style Text	1	O	ServiceListRS/Response/DataLists/ServiceDefinitionList/ServiceDefinition/Description/MarkupStyleText	See in following table the list of possible values.
Service Definition Association	1	O	ServiceListRS/Response/DataLists/ServiceDefinitionList/ServiceDefinition/ServiceDefinitionAssociation	Choice to determine if the information of this Service Definition needs to be extended with specific Bag or Seat characteristics or whether the ServiceDefinition is used as a bundle of further ServiceDefinitions
Baggage Allowance Ref ID	1	M	ServiceListRS/Response/DataLists/ServiceDefinitionList/ServiceDefinition/ServiceDefinitionAssociation/BaggageAllowanceRefID	Reference to a Baggage Allowance ID
Service Bundle Max Qty	1	M	ServiceListRS/Response/DataLists/ServiceDefinitionList/ServiceDefinition/ServiceDefinitionAssociation/ServiceBundle/MaxQty	Maximum quantity of bundle services that can be selected by each passenger referenced in the Offer
Service Definition Reference ID	1	M	ServiceListRS/Response/DataLists/ServiceDefinitionList/ServiceDefinition/ServiceDefinitionAssociation/ServiceBundle/ServiceDefinitionRefID	Reference to further Service Definition which form part of this Service Bundle

MarkupStyleText	DescText	Comments
Service_Type	Contains the ATPCO service type code. Example: F for Flight Related Service.	Applies only for Ancillary services.

MarkupStyleText	DescText	Comments
BKM	Contains the applicable booking method. Possible values are 01 or 02	Applies only for Ancillary services.
Group	Contains the ATPCO service group code. Example: BG for Baggage.	Applies only for Ancillary services.
Subgroup	Contains the ATPCO service subgroup code. Example: SP for Sporting Equipment	Applies only for Ancillary services.
FreeOrChargeable	Contains a Flag to distinguish Free standard services (Value=Free) and Ancillary services (value=Chargeable)	Applies for both Ancillary services and Free standard services. This Mark-up Style Text is returned only if a free services option is provided in the query (CFS). Note: value chargeable is returned for all ancillary services (non exempted and exempted services).
Category_Free	Contains the category of the free standard services defined on SSR table	Applies only for Free Standard Services. This Mark-up Style Text is returned only if a free services option is provided in the query (CFS).

Example (without CFS option):

```

<ServiceDefinitionList>
  <ServiceDefinition>
    <ServiceDefinitionID>SRV1</ServiceDefinitionID>
    <OwnerCode>6X</OwnerCode>
    <Name>PRE PAID BAGGAGE</Name>
    <ReasonForIssuanceCode>C</ReasonForIssuanceCode>
    <ServiceCode>XBAG</ServiceCode>
    <ReasonForIssuanceSubCode>0AA</ReasonForIssuanceSubCode>
    <Description>
      <DescID>1</DescID>
      <DescText>F</DescText>
      <MarkupStyleText>Service_Type</MarkupStyleText>
    </Description>
    <Description>
      <DescID>2</DescID>
      <DescText>01</DescText>
      <MarkupStyleText>BKM</MarkupStyleText>
    </Description>
    <Description>
      <DescID>3</DescID>
      <DescText>BG</DescText>
      <MarkupStyleText>Group</MarkupStyleText>
    </Description>
    <ServiceDefinitionAssociation>
      <BaggageAllowanceRefID>CBA1</BaggageAllowanceRefID>
    </ServiceDefinitionAssociation>
  </ServiceDefinition>
</ServiceDefinitionList>

```

Table 1 ServiceDefinitionList without CFS option

Example (with CFS option):

```

<ServiceDefinitionList>
  <ServiceDefinition>
    <ServiceDefinitionID>SRV1</ServiceDefinitionID>
    <OwnerCode>6X</OwnerCode>
    <Name>PRE PAID BAGGAGE</Name>
    <ReasonForIssuanceCode>C</ReasonForIssuanceCode>
    <ServiceCode>XBAG</ServiceCode>
    <ReasonForIssuanceSubCode>0AA</ReasonForIssuanceSubCode>
    <Description>
      <DescID>1</DescID>
      <DescText>F</DescText>
      <MarkupStyleText>Service_Type</MarkupStyleText>
    </Description>
    <Description>
      <DescID>2</DescID>
      <DescText>01</DescText>
      <MarkupStyleText>BKM</MarkupStyleText>
    </Description>
    <Description>
      <DescID>3</DescID>
      <DescText>BG</DescText>
      <MarkupStyleText>Group</MarkupStyleText>
    </Description>
    <Description>
      <DescID>4</DescID>
      <DescText>Chargeable</DescText>
      <MarkupStyleText>FreeOrChargeable</MarkupStyleText>
    </Description>
    <ServiceDefinitionAssociation>
      <BaggageAllowanceRefID>CBA1</BaggageAllowanceRefID>
    </ServiceDefinitionAssociation>
  </ServiceDefinition>
  <ServiceDefinition>
    <ServiceDefinitionID>SRV2</ServiceDefinitionID>
    <OwnerCode>6X</OwnerCode>
    <Name>BLIND PASSENGER INFORMATION</Name>
    <ServiceCode>BLND</ServiceCode>
    <Description>
      <DescID>1</DescID>
      <DescText>Free</DescText>
      <MarkupStyleText>FreeOrChargeable</MarkupStyleText>
    </Description>
    <Description>
      <DescID>2</DescID>
      <DescText>Passenger</DescText>
      <MarkupStyleText>Category_Free</MarkupStyleText>
    </Description>
  </ServiceDefinition>
</ServiceDefinitionList>

```

Table 2 With CFS option

BookingInstructions

This element is used to return the list of instructions for the formatting of the free text needed in the booking of some services.

Designation	Repetition	Status	Location	Comments
BookingInstructions	1	0	ServiceListRS/Response/DataLists/ServiceDefinitionList/ServiceDefinition/BookingInstructions	Optional service booking instructions to include SSR, OSI and Upgrade Method.
OSIText	1	0	ServiceListRS/Response/DataLists/ServiceDefinitionList/ServiceDefinition/BookingInstructions/OSIText	Other service information (OSI) text. Example: %TYPE%%FTXT%
Text	1	0	ServiceListRS/Response/DataLists/ServiceDefinitionList/ServiceDefinition/BookingInstructions/Text	Data center instructions.

Example:

```

<ServiceDefinitionList>
  <ServiceDefinition>
    <ServiceDefinitionID>SRV1</ServiceDefinitionID>
    <OwnerCode>6X</OwnerCode>
    <Name>PRE PAID BAGGAGE</Name>
    <ReasonForIssuanceCode>C</ReasonForIssuanceCode>
    <ServiceCode>XBAG</ServiceCode>
    <ReasonForIssuanceSubCode>0AA</ReasonForIssuanceSubCode>
    <Description>
      <DescID>1</DescID>
      <DescText>F</DescText>
      <MarkupStyleText>Service_Type</MarkupStyleText>
    </Description>
    <Description>
      <DescID>2</DescID>
      <DescText>01</DescText>
      <MarkupStyleText>BKM</MarkupStyleText>
    </Description>
    <Description>
      <DescID>3</DescID>
      <DescText>BG</DescText>
      <MarkupStyleText>Group</MarkupStyleText>
    </Description>
    <ServiceDefinitionAssociation>
      <BaggageAllowanceRefID>CBA1</BaggageAllowanceRefID>
    </ServiceDefinitionAssociation>
    <BookingInstructions>
      <OSIText>%TYPE%%FTXT%</OSIText>
      <Text>TYPE</Text>
      <Text>(?\ :ABAG|PREPAID|XBGS)</Text>
      <Text>FTXT</Text>
      <Text>[-\s/0-9A-Z]{1,90}</Text>
    </BookingInstructions>
  </ServiceDefinition>
</ServiceDefinitionList>

```

RuleMetadatas

In case a discount has been applied to the price of a service, details on this discount are returned in the RuleMetadata element as follows:

Designation	Repetition	Status	Location	Comments
Object Key	1	M	ServiceListRS/Response/Metadata/Other/OtherMetadata/RuleMetadatas/RuleMetadata/@MetadataKey	Unique rule ID. Ex: DIS523355488. Referenced in price details, together with the amount before discount.

Designation	Repetition	Status	Location	Comments
Rule ID	1	M	ServiceListRS/Response/Metadata/Other/OtherMetadata/RuleMetadatas/RuleMetadata/RuleID	Discount ID
Reason for discount	1	M	ServiceListRS/Response/Metadata/Other/OtherMetadata/RuleMetadatas/RuleMetadata/Values/Value/Instruction	Reason for discount. Ex: HOLIDAY

```

...
<Detail refs="PAX1 DIS523355488">
  <SubTotal>30.00</SubTotal>
  <Application>AMOUNT BEFORE DISCOUNT PAX1</Application>
</Detail>
...
<Metadata>
  <Other>
    <OtherMetadata>
      <RuleMetadatas>
        <RuleMetadata MetadataKey="DIS523355488">
          <RuleID>523355488</RuleID>
          <Values>
            <Value>
              <Instruction>HOLIDAY</Instruction>
            </Value>
          </Values>
        </RuleMetadata>
      </RuleMetadatas>
    </OtherMetadata>
  </Other>
</Metadata>

```

DescriptionMetadatas

Formatting are returned in the DescriptionMetadata element as follows:

Designation	Repetition	Status	Location	Comments
Object Key	1	M	ServiceListRS/Response/Metadata/Other/OtherMetadata/DescriptionMetadatas/DescriptionMetadata/@MetadataKey	Unique rule ID. Ex: AGE4DESC, NUMBER3DESC...
Topic	1	O	ServiceListRS/Response/Metadata/Other/OtherMetadata/DescriptionMetadata/Topic	Description topic. Ex: Age, Number

Designation	Repetition	Status	Location	Comments
			escriptionMetadatas/DescriptionMetadata/Topic	

```

...
<InstructionsList>
  <Instruction ListKey="FMT2">
    <FreeFormTextInstruction>
      <Remark/>
    </FreeFormTextInstruction>
  </Instruction>
  <Instruction ListKey="FMT1">
    <FreeFormTextInstruction>
      <Remark/>
    </FreeFormTextInstruction>
  </Instruction>
  <Instruction refs="AGE4DESC" ListKey="AGE4">
    <FreeFormTextInstruction>
      <Remark>[0-9]{1,2}</Remark>
    </FreeFormTextInstruction>
  </Instruction>
  <Instruction refs="AGE4" ListKey="FMT4">
    <FreeFormTextInstruction>
      <Remark>%AGE4%</Remark>
    </FreeFormTextInstruction>
  </Instruction>
  <Instruction refs="NUMBER3DESC" ListKey="NUMBER3">
    <FreeFormTextInstruction>
      <Remark>[0-9]{1,2}</Remark>
    </FreeFormTextInstruction>
  </Instruction>
  <Instruction refs="NUMBER3" ListKey="FMT3">
    <FreeFormTextInstruction>
      <Remark>TOTAL\s?%NUMBER3%\s?CUSTOMERS</Remark>
    </FreeFormTextInstruction>
  </Instruction>
</InstructionsList>
...
<Metadata>
  <Other>
    <OtherMetadata>
      <DescriptionMetadatas>
        <DescriptionMetadata MetadataKey="AGE4DESC">
          <Topic>Age</Topic>
        </DescriptionMetadata>
        <DescriptionMetadata MetadataKey="NUMBER3DESC">
          <Topic>Number</Topic>
        </DescriptionMetadata>
      </DescriptionMetadatas>
    </OtherMetadata>
  </Other>
</Metadata>

```

Errors

Designation	Repetition	Status	Location	Comments
Code	1	0	ServiceListRS/Error/Code	Error code
Text	1	0	ServiceListRS/Error/DescText	Error text

```

<Error>
  <Code>1</Code>
  <DescText>Too many segment requested</DescText>
</Error>

```

Troubleshooting

List here the error messages that can be returned in the message response to explain that the message couldn't be processed.

- 24963 ITINERARY PRICING REQUIRED BEFORE SERVICE PRICING
- 906 NO VALID PRICING SOLUTION FOUND
- 4199 NO PNR MATCH FOUND

Warning indicating the message could be processed with some limitations:

- 32330 SERVICE PRICES MAY CHANGE BASED ON TICKET FARE DATA
- 40449 REQUESTED TRAVELER PROFILE INFO IGNORED (returned if there is a frequent flyer in input)
- 40459 REQUESTED CORPORATE PROFILE INFO IGNORED (returned if there is a CLID in input)

Free Services

- 38115 CHARGEABLE SERVICES - NO VALID RECOMMENDATION FOUND
- 38116 FREE SERVICES - NO VALID RECOMMENDATION FOUND

Detailed Use Cases

Prime booking flow - Catalog requested for the Offer full content

Use Case Description

Before issuance of the ticket, the catalogue of services is requested for all the passengers and flights present in the offer.

Only the OfferID and the mandatory OfferItemID (containing the flights) are needed in input.

The offer used in the example below contains 2 passengers and 2 flights.

Preconditions

The AirShopping transaction has been successfully run and at least one valid offer with at least one mandatory offer item is stored.

Query

```

<ServiceListRQ>
  <MessageDoc/>
  <Party>
    <Sender>
      <TravelAgency>
        <AgencyID>NCE6X0100</AgencyID>
      </TravelAgency>
    </Sender>
  </Party>
  <Request>
    <CoreRequest>
      <Offer>
        <OfferID>SULG-2782762324289793410-1</OfferID>
        <OwnerCode>6X</OwnerCode>
        <OfferItem>
          <OfferItemID>SULG-2782762324289793410-1-1</OfferItemID>
          <OwnerCode>6X</OwnerCode>
        </OfferItem>
      </Offer>
    </CoreRequest>
  </Request>
</ServiceListRQ>

```

Reply

New offer items are added to the offer given in input in ServiceListRQ. One offer item per service.

```

<ServiceListRS>
  <PayloadAttributes>
    <Version>5.000</Version>
  </PayloadAttributes>
  <Response>
    <ALaCarteOffer>
      <OfferID>SULG-2782762324289793410-1</OfferID>
      <OwnerCode>6X</OwnerCode>
      <ALaCarteOfferItem>
        <OfferItemID>SULG-2782762324289793410-1-4</OfferItemID>
        <UnitPrice>
          <TotalAmount CurCode="EUR">30.00</TotalAmount>
          <BaseAmount CurCode="EUR">30.00</BaseAmount>
          <TaxSummary>
            <TotalTaxAmount CurCode="EUR">0.00</TotalTaxAmount>
          </TaxSummary>
        </UnitPrice>
        <Service>
          <ServiceID>1</ServiceID>
          <ServiceDefinitionRefID>SRV1</ServiceDefinitionRefID>
        </Service>
        <Eligibility>
          <PaxRefID>PAX1</PaxRefID>
          <FlightAssociations>
            <PaxSegmentRefID>SEG3</PaxSegmentRefID>
            <PaxSegmentRefID>SEG15</PaxSegmentRefID>
          </FlightAssociations>
        </Eligibility>
      </ALaCarteOfferItem>
      <ALaCarteOfferItem>
        <OfferItemID>SULG-2782762324289793410-1-5</OfferItemID>
        <UnitPrice>
          <TotalAmount CurCode="EUR">30.00</TotalAmount>
          <BaseAmount CurCode="EUR">30.00</BaseAmount>
          <TaxSummary>
            <TotalTaxAmount CurCode="EUR">0.00</TotalTaxAmount>
          </TaxSummary>
        </UnitPrice>
        <Service>
          <ServiceID>1</ServiceID>
          <ServiceDefinitionRefID>SRV1</ServiceDefinitionRefID>
        </Service>
        <Eligibility>
          <PaxRefID>PAX2</PaxRefID>
          <FlightAssociations>
            <PaxSegmentRefID>SEG3</PaxSegmentRefID>
            <PaxSegmentRefID>SEG15</PaxSegmentRefID>
          </FlightAssociations>
        </Eligibility>
      </ALaCarteOfferItem>
      <ALaCarteOfferItem>
        <OfferItemID>SULG-2782762324289793410-1-6</OfferItemID>
        <UnitPrice>

```

```

    <TotalAmount CurCode="EUR">80.00</TotalAmount>
    <BaseAmount CurCode="EUR">80.00</BaseAmount>
    <TaxSummary>
      <TotalTaxAmount CurCode="EUR">0.00</TotalTaxAmount>
    </TaxSummary>
  </UnitPrice>
  <Service>
    <ServiceID>1</ServiceID>
    <ServiceDefinitionRefID>SRV3</ServiceDefinitionRefID>
  </Service>
  <Eligibility>
    <PaxRefID>PAX1</PaxRefID>
    <FlightAssociations>
      <PaxSegmentRefID>SEG3</PaxSegmentRefID>
      <PaxSegmentRefID>SEG15</PaxSegmentRefID>
    </FlightAssociations>
  </Eligibility>
</ALaCarteOfferItem>
<ALaCarteOffer>
  <DataLists>
    <PaxList>
      <Pax>
        <PaxID>PAX1</PaxID>
        <PTC>ADT</PTC>
      </Pax>
      <Pax>
        <PaxID>PAX2</PaxID>
        <PTC>ADT</PTC>
      </Pax>
    </PaxList>
    <PaxSegmentList>
      <PaxSegment>
        <PaxSegmentID>SEG3</PaxSegmentID>
        <Dep>
          <IATA_LocationCode>HEL</IATA_LocationCode>
          <AircraftScheduledDateTime>2018-09-
27T07:35:00</AircraftScheduledDateTime>
        </Dep>
        <Arrival>
          <IATA_LocationCode>CPH</IATA_LocationCode>
          <AircraftScheduledDateTime>2018-09-
27T08:15:00</AircraftScheduledDateTime>
        </Arrival>
        <MarketingCarrierInfo>
          <CarrierDesigCode>6X</CarrierDesigCode>
          <CarrierName>6X</CarrierName>
        </MarketingCarrierInfo>
        <MarketingCarrierFlightNumberText>951</MarketingCarrierFlightNumberText>
      </PaxSegment>
      <PaxSegment>
        <PaxSegmentID>SEG15</PaxSegmentID>
        <Dep>

```

```

        <IATA_LocationCode>CPH</IATA_LocationCode>
        <AircraftScheduledDateTime>2018-09-
28T13:20:00</AircraftScheduledDateTime>
        </Dep>
        <Arrival>
        <IATA_LocationCode>HEL</IATA_LocationCode>
        <AircraftScheduledDateTime>2018-09-
28T15:50:00</AircraftScheduledDateTime>
        </Arrival>
        <MarketingCarrierInfo>
        <CarrierDesigCode>6X</CarrierDesigCode>
        <CarrierName>6X</CarrierName>

<MarketingCarrierFlightNumberText>954</MarketingCarrierFlightNumberText>
    </MarketingCarrierInfo>
  </PaxSegment>
</PaxSegmentList>
<ServiceDefinitionList>
  <ServiceDefinition>
    <ServiceDefinitionID>SRV1</ServiceDefinitionID>
    <OwnerCode>6X</OwnerCode>
    <Name>PRE PAID BAGGAGE</Name>
    <ServiceCode>PDBG</ServiceCode>
    <ReasonForIssuanceCode>C</ReasonForIssuanceCode>
    <ReasonForIssuanceSubCode>0AA</ReasonForIssuanceSubCode>
    <Description>
      <DescID>1</DescID>
      <DescText>F</DescText>
      <MarkupStyleText>Service_Type</MarkupStyleText>
    </Description>
    <Description>
      <DescID>2</DescID>
      <DescText>01</DescText>
      <MarkupStyleText>BKM</MarkupStyleText>
    </Description>
    <Description>
      <DescID>3</DescID>
      <DescText>BG</DescText>
      <MarkupStyleText>Group</MarkupStyleText>
    </Description>
  </ServiceDefinition>
  <ServiceDefinition>
    <ServiceDefinitionID>SRV3</ServiceDefinitionID>
    <OwnerCode>6X</OwnerCode>
    <Name>EXCESS PIECE SPECIAL CHARGE</Name>
    <ServiceCode>XBGG</ServiceCode>
    <ReasonForIssuanceCode>C</ReasonForIssuanceCode>
    <ReasonForIssuanceSubCode>0H8</ReasonForIssuanceSubCode>
    <Description>
      <DescID>1</DescID>
      <DescText>F</DescText>
      <MarkupStyleText>Service_Type</MarkupStyleText>
    </Description>
  </ServiceDefinition>

```



```

    <Description>
      <DescID>2</DescID>
      <DescText>01</DescText>
      <MarkupStyleText>BKM</MarkupStyleText>
    </Description>
    <Description>
      <DescID>3</DescID>
      <DescText>BG</DescText>
      <MarkupStyleText>Group</MarkupStyleText>
    </Description>
    <Description>
      <DescID>4</DescID>
      <DescText>X7</DescText>
      <MarkupStyleText>Description1</MarkupStyleText>
    </Description>
    <Description>
      <DescID>5</DescID>
      <DescText>X0</DescText>
      <MarkupStyleText>Description2</MarkupStyleText>
    </Description>
  </ServiceDefinitionList>
</DataLists>
<ShoppingResponse>
  <ShoppingResponseID>SULG-2782762324289793410</ShoppingResponseID>
</ShoppingResponse>
</Response>
</ServiceListRS>

```

Prime booking flow - Catalog requested for a selection of passengers

Use Case Description

Before issuance of the ticket, the catalogue of services is requested for a selection of passengers present in the offer.

Preconditions

The AirShopping transaction has been successfully run and at least one valid offer with at least one mandatory offer item is stored.

Query

```

<ServiceListRQ>
  </MessageDoc>
  <Party>
    <Sender>
      <TravelAgency>
        <AgencyID>NCE6X0100</AgencyID>
      </TravelAgency>
    </Sender>
  </Party>
  <Request>
    <CoreRequest>
      <Offer>&
        <OfferID>SPL2-17274461081367343457-1</OfferID>
        <OwnerCode>6X</OwnerCode>
        <OfferItem>
          <OfferItemID>SPL2-17274461081367343457-1-1</OfferItemID>
          <Service>
            <ServiceID>1</ServiceID>
          </Service>
        </OfferItem>
      </Offer>
    </CoreRequest>
    <Paxs>
      <Pax>
        <PaxID>PAX1</PaxID>
      </Pax>
    </Paxs>
  </Request>
</ServiceListRQ>

```

Post-sale flow - Catalog requested (from the OrderID) for the PNR full content

Use Case Description

Through the NDC flow, a flight has been booked and a ticket issued for one passenger. After issuance of the ticket, a catalog is requested for the only passenger in the PNR, using the orderID.

Preconditions

The PNR and the OrderID exist.

Query

```

<ServiceListRQ>
  </MessageDoc>
  <Party>
    <Sender>
      <TravelAgency>
        <AgencyID>NCE6X0100</AgencyID>
      </TravelAgency>
    </Sender>
  </Party>
  <Request>
    <CoreRequest>
      <Order>
        <OrderID>6X_P4MLIZ</OrderID>
        <OwnerCode>6X</OwnerCode>
      </Order>
    </CoreRequest>
  </Request>
</ServiceListRQ>

```

Post-sale flow - Catalog requested (from the OrderID) for a selection of passengers

Use Case Description

Through the NDC flow, a flight has been booked and a ticket issued for two passengers. After issuance of the ticket, a catalog is requested for only one passenger in the PNR, using the orderID.

Preconditions

The PNR and the OrderID exist.

Query

```

<ServiceListRQ>
  </MessageDoc>
  <Party>
    <Sender>
      <TravelAgency>
        <AgencyID>NCE6X0100</AgencyID>
      </TravelAgency>
    </Sender>
  </Party>
  <Request>
    <CoreRequest>
      <Order>
        <OrderID>6X_P4MLIZ</OrderID>
        <OwnerCode>6X</OwnerCode>
      </Order>
    </CoreRequest>
    <Paxs>
      <Pax>
        <PaxID>PAX1</PaxID>
        <Surname>SMITH</Surname>
      </Pax>
    </Paxs>
  </Request>
</ServiceListRQ>

```

Post-sale flow - Catalog requested (from the OrderID) for a selection of flights

Use Case Description

Through the NDC flow, two flights have been booked for one passenger. After issuance of the ticket, a catalog of services is requested for only one flight. The ServiceListRQ is called with the orderID in input.

Preconditions

The PNR and the OrderID exist.

Query

```

<ServiceListRQ>
</MessageDoc>
<Party>
  <Sender>
    <TravelAgency>
      <AgencyID>NCE6X0100</AgencyID>
    </TravelAgency>
  </Sender>
</Party>
<Request>
  <CoreRequest>
    <Order>
      <OrderID>6X_P4MLIZ</OrderID>
      <OwnerCode>6X</OwnerCode>
    </Order>
  </CoreRequest>
  <OriginDest>
    <OriginStationCode>CDG</OriginStationCode>
    <DestStationCode>NCE</DestStationCode>
    <PaxJourney>
      <PaxSegment>
        <PaxSegmentID>SEG12</PaxSegmentID>
        <Dep/>
        <Arrival/>
        <MarketingCarrierInfo>
          <CarrierDesigCode>6X</CarrierDesigCode>
        </MarketingCarrierInfo>
        <MarketingCarrierFlightNumberText>705</MarketingCarrierFlightNumberText>
      </PaxSegment>
    </PaxJourney>
  </OriginDest>
</Request>
</ServiceListRQ>

```

Post-sale flow - Catalog requested (from the PNR Record Locator) for the full PNR content

Use Case Description

Outside the NDC flow, a flight has been booked and a ticket issued for one passenger. After issuance of the ticket, a catalog is requested for the only passenger in the PNR, using the PNR Record Locator.

Preconditions

The PNR exists.

Query

```

<ServiceListRQ>
  </MessageDoc>
  <Party>
    <Sender>
      <TravelAgency>
        <AgencyID>NCE6X0100</AgencyID>
      </TravelAgency>
    </Sender>
  </Party>
  <Request>
    <CoreRequest>
      <Order>
        <OrderID>T9NLDW</OrderID>
        <OwnerCode>6X</OwnerCode>
      </Order>
    </CoreRequest>
  </Request>
</ServiceListRQ>

```

Catalog reply containing a pack of services

Use Case Description

The example shows the reply structure for a catalog that contains packs of services.

Query

The query does not influence the presence of packs of services in the catalogue response.

Reply

```

<ServiceListRS>
  <PayloadAttributes>
    <Version>5.000</Version>
  </PayloadAttributes>
  <Response>
    <ALaCarteOffer>
      <OfferID>SULG-15932374674027125525-</OfferID>
      <OwnerCode>6X</OwnerCode>
      <ALaCarteOfferItem>
        <OfferItemID>SULG-15932374674027125525-1-1</OfferItemID>
        <UnitPrice>
          <TotalAmount CurCode="EUR">15.00</TotalAmount>
          <BaseAmount CurCode="EUR">15.00</BaseAmount>
          <TaxSummary>
            <TotalTaxAmount CurCode="EUR">0.00</TotalTaxAmount>
          </TaxSummary>
        </UnitPrice>
        <Service>
          <ServiceID>1</ServiceID>
          <ServiceDefinitionRefID>SRV1</ServiceDefinitionRefID>
        </Service>
        <Eligibility>
          <PaxRefID>PAX1</PaxRefID>
          <FlightAssociations>
            <PaxSegmentRefID>SEG1</PaxSegmentRefID>
          </FlightAssociations>
        </Eligibility>
      </ALaCarteOfferItem>
    </ALaCarteOffer>
    <DataLists>
      <PaxList>
        <Pax>
          <PaxID>PAX1</PaxID>
          <PTC>ADT</PTC>
        </Pax>
      </PaxList>
      <PaxSegmentList>
        <PaxSegment>
          <PaxSegmentID>SEG1</PaxSegmentID>
          <Dep>
            <IATA_LocationCode>HEL</IATA_LocationCode>
            <AircraftScheduledDateTime>2018-09-
21T07:35:00</AircraftScheduledDateTime>
          </Dep>
          <Arrival>
            <IATA_LocationCode>CPH</IATA_LocationCode>
            <AircraftScheduledDateTime>2018-09-
21T08:15:00</AircraftScheduledDateTime>
          </Arrival>
          <MarketingCarrierInfo>
            <CarrierDesigCode>6X</CarrierDesigCode>
            <CarrierName>6X</CarrierName>
          </MarketingCarrierInfo>
        </PaxSegment>
      </PaxSegmentList>
    </DataLists>
  </Response>
</ServiceListRS>

```



```

<MarketingCarrierFlightNumberText>951</MarketingCarrierFlightNumberText>
  </MarketingCarrierInfo>
</PaxSegment>
</PaxSegmentList>
<ServiceDefinitionList>
  <ServiceDefinition>
    <ServiceDefinitionID>SRV1</ServiceDefinitionID>
    <OwnerCode>6X</OwnerCode>
    <Name>PRE PAID BAGGAGE</Name>
    <ServiceCode>PDBG</ServiceCode>
    <ReasonForIssuanceCode>C</ReasonForIssuanceCode>
    <ReasonForIssuanceSubCode>0AA</ReasonForIssuanceSubCode>
    <Description>
      <DescID>1</DescID>
      <DescText>F</DescText>
      <MarkupStyleText>Service_Type</MarkupStyleText>
    </Description>
    <Description>
      <DescID>2</DescID>
      <DescText>01</DescText>
      <MarkupStyleText>BKM</MarkupStyleText>
    </Description>
    <Description>
      <DescID>3</DescID>
      <DescText>BG</DescText>
      <MarkupStyleText>Group</MarkupStyleText>
    </Description>
  </ServiceDefinition>
</ServiceDefinitionList>
</DataLists>
<ShoppingResponse>
  <ShoppingResponseID>SPL2-9129195161566499118</ShoppingResponseID>
</ShoppingResponse>
</Response>
</ServiceListRS>

```

Prime booking flow - Catalog requested with CFS option (Chargeable and Free Services)

Use Case Description

ServiceListRS returns both the chargeable (ancillaries) services and the free services.

Query

```

<ServiceListRQ>
  <MessageDoc/>
  <Party>
    <Sender>
      <TravelAgency>
        <AgencyID>NCE6X0100</AgencyID>
      </TravelAgency>
    </Sender>
  </Party>
  <Request>
    <CoreRequest>
      <Offer>
        <OfferID>SULG-2782762324289793410-1</OfferID>
        <OwnerCode>6X</OwnerCode>
        <OfferItem>
          <OfferItemID>SULG-2782762324289793410-1-1</OfferItemID>
          <OwnerCode>6X</OwnerCode>
        </OfferItem>
      </Offer>
    </CoreRequest>
    <ShoppingCriteria>
      <ServiceCriteria>
        <PrefLevel>
          <PrefContextText>CFS</PrefContextText>
        </PrefLevel>
      </ServiceCriteria>
    </ShoppingCriteria>
  </Request>
</ServiceListRQ>

```

Table 3 Query with CFS option

Reply

```

<ServiceListRS>
  <PayloadAttributes>
    <Version>5.000</Version>
  </PayloadAttributes>
  <Response>
    <ALaCarteOffer>
      <OfferID>SULG-2782762324289793410-1</OfferID>
      <OwnerCode>6X</OwnerCode>
      <ALaCarteOfferItem>
        <OfferItemID>SULG-2782762324289793410-1-4</OfferItemID>
        <UnitPrice>
          <TotalAmount CurCode="EUR">30.00</TotalAmount>
          <BaseAmount CurCode="EUR">30.00</BaseAmount>
          <TaxSummary>
            <TotalTaxAmount CurCode="EUR">0.00</TotalTaxAmount>
          </TaxSummary>
        </UnitPrice>
        <Service>
          <ServiceID>1</ServiceID>
          <ServiceDefinitionRefID>SRV1</ServiceDefinitionRefID>
        </Service>
        <Eligibility>
          <PaxRefID>PAX1</PaxRefID>
          <FlightAssociations>
            <PaxSegmentRefID>SEG3</PaxSegmentRefID>
            <PaxSegmentRefID>SEG15</PaxSegmentRefID>
          </FlightAssociations>
        </Eligibility>
      </ALaCarteOfferItem>
      <ALaCarteOfferItem>
        <OfferItemID>SULG-2782762324289793410-1-5</OfferItemID>
        <UnitPrice>
          <TotalAmount CurCode="EUR">30.00</TotalAmount>
          <BaseAmount CurCode="EUR">30.00</BaseAmount>
          <TaxSummary>
            <TotalTaxAmount CurCode="EUR">0.00</TotalTaxAmount>
          </TaxSummary>
        </UnitPrice>
        <Service>
          <ServiceID>1</ServiceID>
          <ServiceDefinitionRefID>SRV1</ServiceDefinitionRefID>
        </Service>
        <Eligibility>
          <PaxRefID>PAX2</PaxRefID>
          <FlightAssociations>
            <PaxSegmentRefID>SEG3</PaxSegmentRefID>
            <PaxSegmentRefID>SEG15</PaxSegmentRefID>
          </FlightAssociations>
        </Eligibility>
      </ALaCarteOfferItem>
      <ALaCarteOfferItem>
        <OfferItemID>SULG-2782762324289793410-1-6</OfferItemID>
        <UnitPrice>

```

```

    <TotalAmount CurCode="EUR">80.00</TotalAmount>
    <BaseAmount CurCode="EUR">80.00</BaseAmount>
    <TaxSummary>
      <TotalTaxAmount CurCode="EUR">0.00</TotalTaxAmount>
    </TaxSummary>
  </UnitPrice>
  <Service>
    <ServiceID>1</ServiceID>
    <ServiceDefinitionRefID>SRV3</ServiceDefinitionRefID>
  </Service>
  <Eligibility>
    <PaxRefID>PAX1</PaxRefID>
    <FlightAssociations>
      <PaxSegmentRefID>SEG3</PaxSegmentRefID>
      <PaxSegmentRefID>SEG15</PaxSegmentRefID>
    </FlightAssociations>
  </Eligibility>
</ALaCarteOfferItem>
<ALaCarteOfferItem>
  <OfferItemID>SULG-2782762324289793410-1-7</OfferItemID>
  <UnitPrice>
    <TotalAmount>0</TotalAmount>
  </UnitPrice>
  <Service>
    <ServiceID>1</ServiceID>
    <ServiceDefinitionRefID>SRV4</ServiceDefinitionRefID>
  </Service>
  <Eligibility>
    <PaxRefID>PAX1</PaxRefID>
    <FlightAssociations>
      <PaxSegmentRefID>SEG3</PaxSegmentRefID>
    </FlightAssociations>
  </Eligibility>
</ALaCarteOfferItem>
<ALaCarteOfferItem>
  <OfferItemID>SULG-2782762324289793410-1-8</OfferItemID>
  <UnitPrice>
    <TotalAmount>0</TotalAmount>
  </UnitPrice>
  <Service>
    <ServiceID>1</ServiceID>
    <ServiceDefinitionRefID>SRV5</ServiceDefinitionRefID>
  </Service>
  <Eligibility>
    <PaxRefID>PAX1</PaxRefID>
    <FlightAssociations>
      <PaxSegmentRefID>SEG15</PaxSegmentRefID>
    </FlightAssociations>
  </Eligibility>
</ALaCarteOfferItem>
<ALaCarteOffer>
  <DataLists>
    <PaxList>

```

```

    <Pax>
      <PaxID>PAX1</PaxID>
      <PTC>ADT</PTC>
    </Pax>
    <Pax>
      <PaxID>PAX2</PaxID>
      <PTC>ADT</PTC>
    </Pax>
  </PaxList>
  <PaxSegmentList>
    <PaxSegment>
      <PaxSegmentID>SEG3</PaxSegmentID>
      <Dep>
        <IATA_LocationCode>HEL</IATA_LocationCode>
        <AircraftScheduledDateTime>2018-09-
27T07:35:00</AircraftScheduledDateTime>
      </Dep>
      <Arrival>
        <IATA_LocationCode>CPH</IATA_LocationCode>
        <AircraftScheduledDateTime>2018-09-
27T08:15:00</AircraftScheduledDateTime>
      </Arrival>
      <MarketingCarrierInfo>
        <CarrierDesigCode>6X</CarrierDesigCode>
        <CarrierName>6X</CarrierName>

<MarketingCarrierFlightNumberText>951</MarketingCarrierFlightNumberText>
      </MarketingCarrierInfo>
    </PaxSegment>
    <PaxSegment>
      <PaxSegmentID>SEG15</PaxSegmentID>
      <Dep>
        <IATA_LocationCode>CPH</IATA_LocationCode>
        <AircraftScheduledDateTime>2018-09-
28T13:20:00</AircraftScheduledDateTime>
      </Dep>
      <Arrival>
        <IATA_LocationCode>HEL</IATA_LocationCode>
        <AircraftScheduledDateTime>2018-09-
28T15:50:00</AircraftScheduledDateTime>
      </Arrival>
      <MarketingCarrierInfo>
        <CarrierDesigCode>6X</CarrierDesigCode>
        <CarrierName>6X</CarrierName>

<MarketingCarrierFlightNumberText>954</MarketingCarrierFlightNumberText>
      </MarketingCarrierInfo>
    </PaxSegment>
  </PaxSegmentList>
  <ServiceDefinitionList>
    <ServiceDefinition>
      <ServiceDefinitionID>SRV1</ServiceDefinitionID>
      <OwnerCode>6X</OwnerCode>

```

```

<Name>PRE PAID BAGGAGE</Name>
<ServiceCode>PDBG</ServiceCode>
<ReasonForIssuanceCode>C</ReasonForIssuanceCode>
<ReasonForIssuanceSubCode>0AA</ReasonForIssuanceSubCode>
<Description>
  <DescID>1</DescID>
  <DescText>F</DescText>
  <MarkupStyleText>Service_Type</MarkupStyleText>
</Description>
<Description>
  <DescID>2</DescID>
  <DescText>01</DescText>
  <MarkupStyleText>BKM</MarkupStyleText>
</Description>
<Description>
  <DescID>3</DescID>
  <DescText>BG</DescText>
  <MarkupStyleText>Group</MarkupStyleText>
</Description>
<Description>
  <DescID>4</DescID>
  <DescText>Chargeable</DescText>
  <MarkupStyleText>FreeOrChargeable</MarkupStyleText>
</Description>
</ServiceDefinition>
<ServiceDefinition>
  <ServiceDefinitionID>SRV3</ServiceDefinitionID>
  <OwnerCode>6X</OwnerCode>
  <Name>EXCESS PIECE SPECIAL CHARGE</Name>
  <ServiceCode>XBGG</ServiceCode>
  <ReasonForIssuanceCode>C</ReasonForIssuanceCode>
  <ReasonForIssuanceSubCode>0H8</ReasonForIssuanceSubCode>
  <Description>
    <DescID>1</DescID>
    <DescText>F</DescText>
    <MarkupStyleText>Service_Type</MarkupStyleText>
  </Description>
  <Description>
    <DescID>2</DescID>
    <DescText>01</DescText>
    <MarkupStyleText>BKM</MarkupStyleText>
  </Description>
  <Description>
    <DescID>3</DescID>
    <DescText>BG</DescText>
    <MarkupStyleText>Group</MarkupStyleText>
  </Description>
  <Description>
    <DescID>4</DescID>
    <DescText>X7</DescText>
    <MarkupStyleText>Description1</MarkupStyleText>
  </Description>
  <Description>

```

```

        <DescID>5</DescID>
        <DescText>X0</DescText>
        <MarkupStyleText>Description2</MarkupStyleText>
    </Description>
    <Description>
        <DescID>6</DescID>
        <DescText>Chargeable</DescText>
        <MarkupStyleText>FreeOrChargeable</MarkupStyleText>
    </Description>
</ServiceDefinition>
</ServiceDefinitionList>
<ServiceDefinition>
    <ServiceDefinitionID>SRV4</ServiceDefinitionID>
    <OwnerCode>6X</OwnerCode>
    <Name>VEGETARIAN MEAL</Name>
    <ServiceCode>VGML</ServiceCode>
    <Description>
        <DescID>1</DescID>
        <DescText>Free</DescText>
        <MarkupStyleText>FreeOrChargeable</MarkupStyleText>
    </Description>
    <Description>
        <DescID>2</DescID>
        <DescText>MEAL</DescText>
        <MarkupStyleText>Category_Free</MarkupStyleText>
    </Description>
</ServiceDefinition>
</ServiceDefinitionList>
<ServiceDefinition>
    <ServiceDefinitionID>SRV5</ServiceDefinitionID>
    <OwnerCode>6X</OwnerCode>
    <Name>BLIND PASSENGER INFORMATION</Name>
    <ServiceCode>BLND</ServiceCode>
    <Description>
        <DescID>1</DescID>
        <DescText>Free</DescText>
        <MarkupStyleText>FreeOrChargeable</MarkupStyleText>
    </Description>
    <Description>
        <DescID>2</DescID>
        <DescText>PASSENGER</DescText>
        <MarkupStyleText>Category_Free</MarkupStyleText>
    </Description>
</ServiceDefinition>
</DataLists>
<ShoppingResponse>
    <ShoppingResponseID>SULG-2782762324289793410</ShoppingResponseID>
</ShoppingResponse>
</Response>
</ServiceListRS>

```

Table 4 Reply with both chargeable and free services

Catalog reply containing an error

Use Case Description

Example of a global reject.

Reply

```
<ServiceListRS>
  <PayloadAttributes>
    <Version>5.000</Version>
  </PayloadAttributes>
  <Error>
    <Code>911</Code>
    <DescText>UNABLE TO RETRIEVE THE OFFER</DescText>
  </Error>
</ServiceListRS>
```

Catalog reply containing a warning

Use Case Description

The example shows the reply structure in a case where a warning is returned. It differs from a global reject case, because this is a case of success and some catalog content could be computed under the assumption/limitation described in the warning message.

Reply

```
<ServiceListRS>
  <PayloadAttributes>
    <Version>5.000</Version>
  </PayloadAttributes>
  <Response>
    <Warning>
      <DescText>SERVICE PRICES MAY CHANGE BASED ON TICKET FARE
      DATA</DescText>
    </Warning>
  </Response>
</ServiceListRS>
```

Legal disclaimer

This document, including all information contained herein and any attached or related documents, is strictly confidential and proprietary information of Amadeus and its respective affiliates, subsidiaries, members, vendors and/or suppliers (the “Confidential Information”) and is being shared with you for the sole and exclusive purpose of providing a functional solution overview between the airline and NDC consumer as part of Amadeus Altéa NDC. This document is intended solely for information purposes. If you are not the intended recipient you are notified that disclosing, copying or distributing the contents of this document or information is strictly prohibited. Any Amadeus intellectual property or other information contained in this document or relating to the solutions, any products or services described herein shall remain the sole and exclusive property of Amadeus or its licensees, as applicable. Nothing herein shall constitute a license, transfer or other grant of any rights in or to the information or intellectual property contained or referenced herein. Any solutions, products, services or company names that may be referred to in this presentation that are trademarks are herewith acknowledged. Any disputes in connection with the breach of the above provisions shall be governed by and construed in accordance with English law and is submitted to the exclusive jurisdiction of the courts of London. Any content within this document is subject to an agreement being entered into between the parties and will not be considered as binding until agreed and formalised by the parties under a definitive agreement.