

# OrderList 21.3

## Implementation guide

# Table of Contents

- Interface Overview ..... 3
  - Description ..... 3
  - Current scope ..... 3
  - Out of scope ..... 3
  - Sequence diagram ..... 3
- Building a query: OrderListRQ ..... 4
  - Distribution Chain ..... 4
  - Payload Attributes ..... 7
  - POS ..... 8
  - Request ..... 8
- Receiving a reply: OrderListRS ..... 10
  - MatchedOrder ..... 10
  - Errors ..... 11
- Examples ..... 13
- Legal disclaimer ..... 16

# Interface Overview

## Description

With order list, airline partners can retrieve the list of orders based on search criteria. This service aims to give a simple way for airline partners to retrieve order when they do not the orderId as reference.

## Current scope

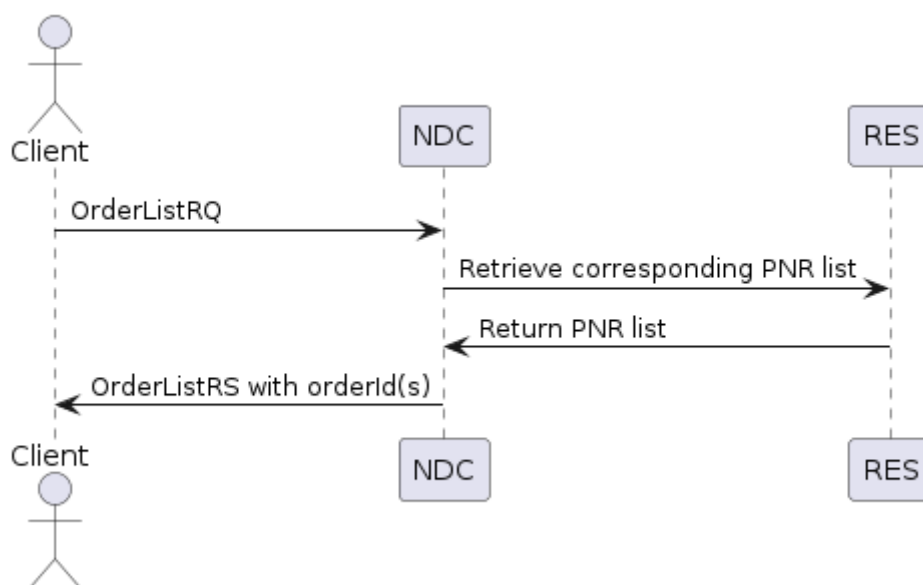
Order list supports to different search criteria:

- search by passenger name.
- search based on seller identification (from DistributionChain node).

## Out of scope

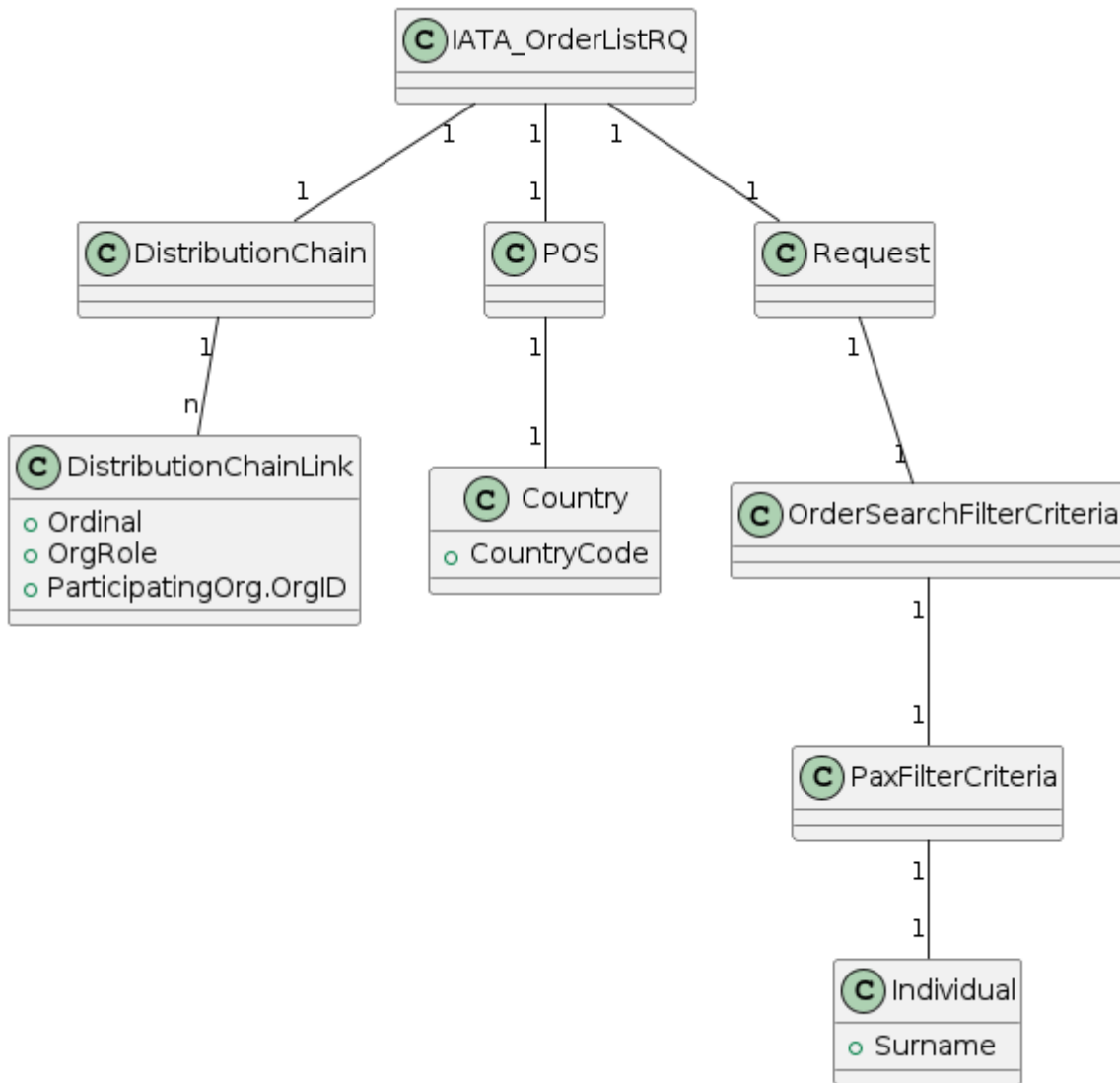
Other type of search is not yet supported

## Sequence diagram



## Building a query: OrderListRQ

This section describes the implementation of the input message based on the NDC schema version 21.3. Class diagram describing the *OrderListRQ* xml:



## Distribution Chain

The distribution chain data must be provided in any input request of the services described above:

Designation	Repetition	Status	Location	Comments
<b>Distribution Chain Link</b>	<b>1...N</b>	<b>M</b>	<b>.../DistributionChain/DistributionChainLink</b>	<b>Defines an organization playing a participating role in an instance of a distribution channel.</b>  <u>NB: No more than 3 entities can be considered - a single seller / a single distributor / a single carrier.</u>
Ordinal	1	M	/Ordinal	Position of the organization in the distribution chain. This number indicates the order in which the organization participated. Position starts with "1" following ascending order from the seller to the carrier.
Organization Role	1	M	/OrgRole	Role of the organization participating in the distribution chain defined as follow: <ul style="list-style-type: none"> <li>• Seller - End buyer facing.</li> <li>• Distributor - an intermediary.</li> <li>• Carrier - the responsible supplier.</li> </ul>
<b>Contact Info</b>	<b>0...1</b>	<b>O</b>	<b>.../DistributionChain/DistributionChainLink/ContactInfo</b>	<b>The electronic or geographic address provided by an organization as the contact channel</b>
Contact Info ID	1	M	/ContactInfoID	Organization's contact unique Identifier acting as a reference.
Contact Purpose Text	0...1	O	/ContactPurposeText	Fixed value: "STANDARD".
<b>Email</b>	<b>0...1</b>	<b>O</b>	<b>/EmailAddress</b>	
Email Address	1	M	/EmailAddress/EmailAddressText	The seller's email address used for contact purposes.  NB: Only used at OrderCreateRQ.
<b>Phone</b>	<b>0...1</b>	<b>O</b>	<b>/Phone</b>	
Type of contact	0...1	O	/Phone/ContactTypeText	Fixed value: "Mobile".

Designation	Repetition	Status	Location	Comments
				NB: Only used at OrderCreateRQ.
Phone number	0...1	O	/Phone/PhoneNumber	The seller's phone number used for contact purposes. Example: +33689788958
<b>Participating Organization</b>	<b>1</b>	<b>M</b>	<b>.../DistributionChain/DistributionChainLink/ParticipatingOrg</b>	<b>Organized structure representing the participants.</b>
Organization Name	0...1	O	/Name	Name of the organization.
Organization ID	1	M	/OrgID	Organization code or identifier. Possible values: <ul style="list-style-type: none"> <li>for Seller: IATA Number, TIDs (Travel Industry Designator Service), AgencyID.</li> <li>for Distributor: Unique alphanumeric identifier (3 characters maximum).</li> <li>for Carrier: Airline Code (2 alphanumeric identifier).</li> </ul> AgencyID shall be used when partner has no IATA Number nor TIDS and it must be an 8-digit numeric code to be reported to the revenue accounting.
<b>Sales Branch</b>	<b>0...1</b>	<b>O</b>	<b>.../DistributionChain/DistributionChainLink/SalesBranch</b>	
Sales Branch ID	1	M	/SalesBranch/SalesBranchID	The industry-wide unique identifier of the sales branch. Commonly, Pseudo City Code may be used or a bilaterally agreed code.

```

<DistributionChain>
  <DistributionChainLink>
    <ContactInfo>
      <ContactInfoID>123456</ContactInfoID>
      <EmailAddress>
        <EmailAddressText>TEST@AMADEUS.COM</EmailAddressText>
      </EmailAddress>
      <Phone>
        <PhoneNumber>+33493101010</PhoneNumber>
      </Phone>
    </ContactInfo>
    <Ordinal>1</Ordinal>
    <OrgRole>Seller</OrgRole>
    <ParticipatingOrg>
      <OrgID>12345678</OrgID>
    </ParticipatingOrg>
    <SalesBranch>
      <SalesBranchID>NCE6X01AB</SalesBranchID>
    </SalesBranch>
  </DistributionChainLink>
  <DistributionChainLink>
    <Ordinal>2</Ordinal>
    <OrgRole>Distributor</OrgRole>
    <ParticipatingOrg>
      <OrgID>1A</OrgID>
    </ParticipatingOrg>
  </DistributionChainLink>
  <DistributionChainLink>
    <Ordinal>3</Ordinal>
    <OrgRole>Carrier</OrgRole>
    <ParticipatingOrg>
      <OrgID>6X</OrgID>
    </ParticipatingOrg>
  </DistributionChainLink>
</DistributionChain>

```

Table 1 Example of DistributionChain

## Payload Attributes

IATA payload standard attributes.

Designation	Repetition	Status	Location	Comments
Message version	0...1	O	.../PayloadAttributes/VersionNumber	The IATA NDC schema we comply with - the version of the message is indicated by a decimal value.

```
<PayloadAttributes>
  <VersionNumber>21.3</VersionNumber>
</PayloadAttributes>
```

Table 2 Example of PayloadAttributes

## POS

The Point of Sale is the information identifying the location and other attributes of the entity performing transactions.

Designation	Repetition	Status	Location	Comments
Country Code	1	M*	.../POS/Country/CountryCode	Country code following ISO 3166 with 2 alpha country code. Examples: FR, US.  <i>*Mandatory field for configuration purpose (Agency handling, Reporting, ...).</i>

```
<POS>
  <Country>
    <CountryCode>FR</CountryCode>
  </Country>
</POS>
```

Table 3 Example of POS

## Request

The following data has to be provided in input of the service:

Designation	Repetition	Status	Location	Comments
<b>OrderSearch Filter Criteria</b>	<b>1</b>	<b>M</b>	<b>IATA_OrderListRQ/Request/OrderSearchFilterCriteria</b>	
Surname	1	O	/OrderSearchFilterCriteria/PassFilterCriteria/Individual/Surname	

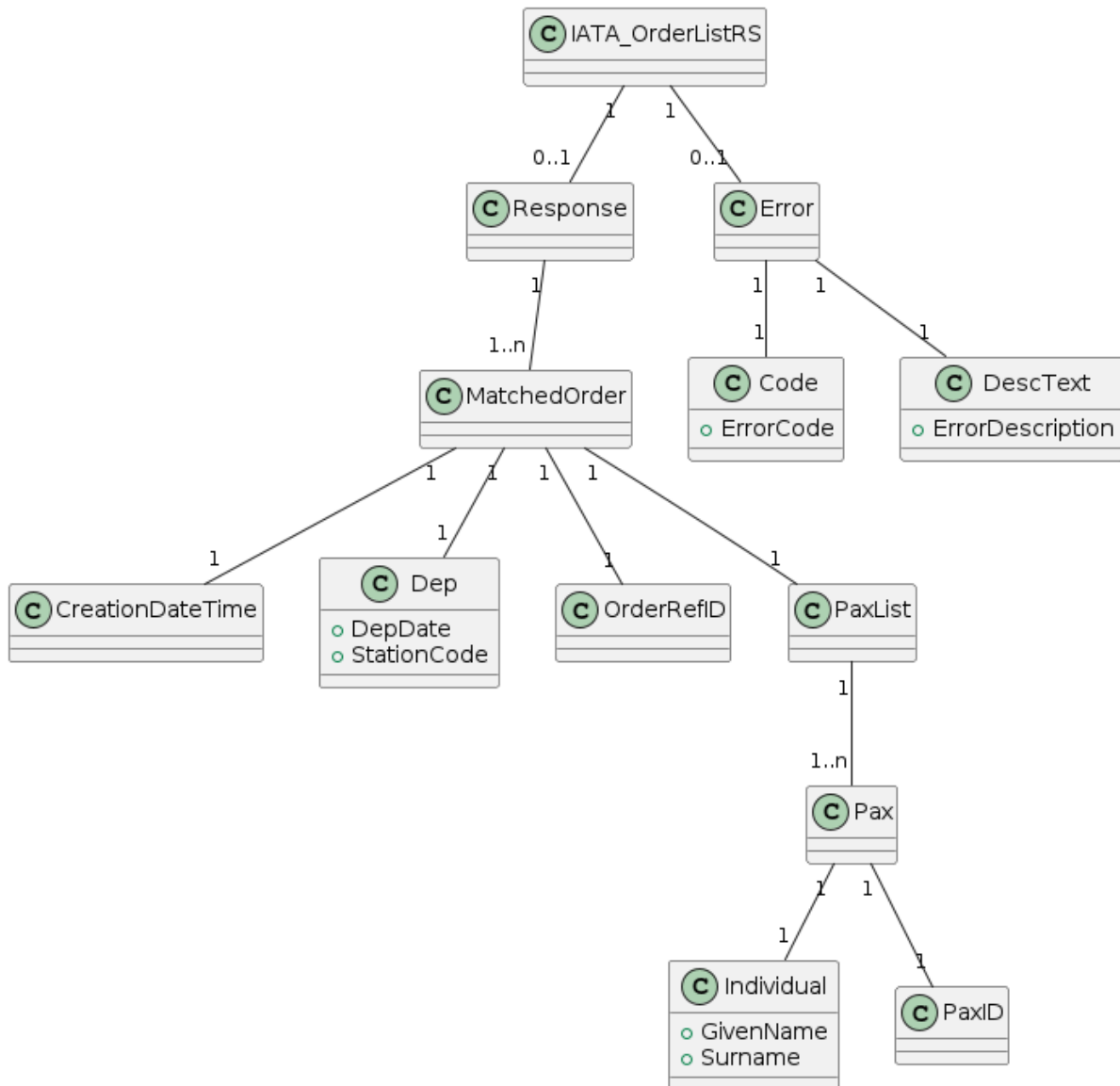


```
<Request
xmlns="http://www.iata.org/IATA/2015/EASD/00/IATA_OffersAndOrdersMessage">
  <OrderSearchFilterCriteria>
    <PaxFilterCriteria>
      <Individual>
        <Surname>SMITH</Surname>
      </Individual>
    </PaxFilterCriteria>
  </OrderSearchFilterCriteria>
</Request>
```

Table 4 Example of OrderList Request

# Receiving a reply: OrderListRS

This section describes the implementation of the input message based on the NDC schema version 21.3.



## MatchedOrder

This field indicates if transaction is successfully completed.

Designation	Repetition	Status	Location	Comments
<b>Order structure</b>	<b>1...N</b>	<b>O</b>	<b>IATA_OrderListRS/Response/MatchedOrder</b>	
Creation date	1	M	/MatchedOrder/CreationDateTime	
Departure date	1	M	/MatchedOrder/Dep/DepDate	Departure date of first segment in order.
Departure location	1	M	/MatchedOrder/Dep/StationCode	
OrderId	1	M	/MatchedOrder/OrderRefID	
Pax	1	M	/MatchedOrder/PaxList/Pax	Only the first PAX from the order will be returned in PAXList.
Given name	1	M	/MatchedOrder/PaxList/Pax/Individual/GivenName	
Surname	1	M	/MatchedOrder/PaxList/Pax/Individual/Surname	
Pax ID	1	M	/MatchedOrder/PaxList/Pax/PaxID	

## Errors

If a blocking error occurs during the process, the error structure is returned in response:

Designation	Repetition	Status	Location	Comments
<b>Error structure</b>	<b>1</b>	<b>M</b>	<b>IATA_OrderListRS/Error</b>	
Error code	1	M	/Error/Code	
Error message	1	M	/Error/DescText	
Error message language code	1	M	/Error/LangCode	
Error type code	1	M	/Error/TypeCode	

```
<IATA_OrderListRS>  
  <Error>  
    <Code>911</Code>  
    <DescText>NO ORDER FOUND</DescText>  
    <LangCode>EN</LangCode>  
    <TypeCode>E</TypeCode>  
  </Error>  
</IATA_OrderListRS>
```

Table 5 Example of OrderListRS

## Examples

### OrderListRQ Query

```

<IATA_OrderListRQ xmlns:xsi="http://www.w3.org/2001/XMLSchema-instance"
xmlns:n1="http://www.iata.org/IATA/2015/EASD/00/IATA_OffersAndOrdersMessage"
xmlns:cns="http://www.iata.org/IATA/2015/EASD/00/IATA_OffersAndOrdersCommonTypes">
  <DistributionChain
xmlns="http://www.iata.org/IATA/2015/EASD/00/IATA_OffersAndOrdersCommonTypes">
    <DistributionChainLink>
      <Ordinal>0</Ordinal>
      <OrgRole>Seller</OrgRole>
      <ParticipatingOrg>
        <OrgID>12345678</OrgID>
      </ParticipatingOrg>
    </DistributionChainLink>
    <DistributionChainLink>
      <Ordinal>1</Ordinal>
      <OrgRole>Distributor</OrgRole>
      <ParticipatingOrg>
        <OrgID>1A</OrgID>
      </ParticipatingOrg>
    </DistributionChainLink>
    <DistributionChainLink>
      <Ordinal>2</Ordinal>
      <OrgRole>Carrier</OrgRole>
      <ParticipatingOrg>
        <OrgID>6X</OrgID>
      </ParticipatingOrg>
    </DistributionChainLink>
  </DistributionChain>
  <POS
xmlns="http://www.iata.org/IATA/2015/EASD/00/IATA_OffersAndOrdersMessage">
    <Country
xmlns:cns="http://www.iata.org/IATA/2015/EASD/00/IATA_OffersAndOrdersCommonTypes">
      <CountryCode>FR</CountryCode>
    </Country>
  </POS>
  <Request
xmlns="http://www.iata.org/IATA/2015/EASD/00/IATA_OffersAndOrdersMessage">
    <OrderSearchFilterCriteria>
      <PaxFilterCriteria>
        <Individual>
          <Surname>SMITH</Surname>
        </Individual>
      </PaxFilterCriteria>
    </OrderSearchFilterCriteria>
  </Request>
</IATA_OrderListRQ>

```

Table 6 OrderListRQ search by name

```

<IATA_OrderListRQ xmlns:xsi="http://www.w3.org/2001/XMLSchema-instance"
xmlns:n1="http://www.iata.org/IATA/2015/EASD/00/IATA_OffersAndOrdersMessage"
xmlns:cns="http://www.iata.org/IATA/2015/EASD/00/IATA_OffersAndOrdersCommonTypes">
  <DistributionChain
xmlns="http://www.iata.org/IATA/2015/EASD/00/IATA_OffersAndOrdersCommonTypes">
    <DistributionChainLink>
      <Ordinal>0</Ordinal>
      <OrgRole>Seller</OrgRole>
      <ParticipatingOrg>
        <OrgID>12345678</OrgID>
      </ParticipatingOrg>
    </DistributionChainLink>
    <DistributionChainLink>
      <Ordinal>1</Ordinal>
      <OrgRole>Distributor</OrgRole>
      <ParticipatingOrg>
        <OrgID>1A</OrgID>
      </ParticipatingOrg>
    </DistributionChainLink>
    <DistributionChainLink>
      <Ordinal>2</Ordinal>
      <OrgRole>Carrier</OrgRole>
      <ParticipatingOrg>
        <OrgID>6X</OrgID>
      </ParticipatingOrg>
    </DistributionChainLink>
  </DistributionChain>
  <POS
xmlns="http://www.iata.org/IATA/2015/EASD/00/IATA_OffersAndOrdersMessage">
    <Country
xmlns:cns="http://www.iata.org/IATA/2015/EASD/00/IATA_OffersAndOrdersCommonTypes">
      <CountryCode>FR</CountryCode>
    </Country>
  </POS>
  <Request
xmlns="http://www.iata.org/IATA/2015/EASD/00/IATA_OffersAndOrdersMessage">
    <OrderSearchFilterCriteria/>
  </Request>
</IATA_OrderListRQ>

```

Table 7 OrderListRQ search my own orders

## OrderListRS reply

```

<IATA_OrderListRS xmlns:xsi="http://www.w3.org/2001/XMLSchema-instance"
xmlns:n2="http://www.altova.com/samplexml/other-namespace"
xmlns:n1="http://www.iata.org/IATA/2015/EASD/00/IATA_OffersAndOrdersMessage"
xmlns:cns="http://www.iata.org/IATA/2015/EASD/00/IATA_OffersAndOrdersCommonTypes" >
  <Response>
    <MatchedOrder>
      <CreationDateTime>2021-12-17T09:30:00Z</CreationDateTime>
      <Dep>
        <DepDate>2021-11-01</DepDate>
        <StationCode>NYK</StationCode>
      </Dep>
      <OrderRefID>6X61NEW4G3W7600</OrderRefID>
      <PaxList>
        <Pax>
          <Individual>
            <GivenName>JANE</GivenName>
            <Surname>SMITH</Surname>
          </Individual>
          <PaxID>PAX2</PaxID>
        </Pax>
      </PaxList>
    </MatchedOrder>
    <MatchedOrder>
      <CreationDateTime>2021-11-05T11:00:00Z</CreationDateTime>
      <Dep>
        <DepDate>2021-12-21</DepDate>
        <StationCode>NCE</StationCode>
      </Dep>
      <OrderRefID>6X_NLTZQT</OrderRefID>
      <PaxList>
        <Pax>
          <Individual>
            <GivenName>JOHN</GivenName>
            <Surname>SMITH</Surname>
          </Individual>
          <PaxID>PAX2</PaxID>
        </Pax>
      </PaxList>
    </MatchedOrder>
  </Response>
</IATA_OrderListRS>

```

Table 8 OrderListRS

## Legal disclaimer

This document, including all information contained herein and any attached or related documents, is strictly confidential and proprietary information of Amadeus and its respective affiliates, subsidiaries, members, vendors and/or suppliers (the “Confidential Information”) and is being shared with you for the sole and exclusive purpose of providing a functional solution overview between the airline and NDC consumer as part of Amadeus Altéa NDC. This document is intended solely for information purposes. If you are not the intended recipient you are notified that disclosing, copying or distributing the contents of this document or information is strictly prohibited. Any Amadeus intellectual property or other information contained in this document or relating to the solutions, any products or services described herein shall remain the sole and exclusive property of Amadeus or its licensees, as applicable. Nothing herein shall constitute a license, transfer or other grant of any rights in or to the information or intellectual property contained or referenced herein. Any solutions, products, services or company names that may be referred to in this presentation that are trademarks are herewith acknowledged. Any disputes in connection with the breach of the above provisions shall be governed by and construed in accordance with English law and is submitted to the exclusive jurisdiction of the courts of London. Any content within this document is subject to an agreement being entered into between the parties and will not be considered as binding until agreed and formalised by the parties under a definitive agreement.