

# AirlineProfile 20.2 Implementation guide

- [Interface Overview](#)
  - [Description](#)
  - [Current Scope](#)
  - [Out of scope](#)
  - [Sequence Diagram](#)
- [Building a query: AirlineProfileRQ](#)
  - [Point of sale](#)
  - [Party](#)
  - [Request](#)
- [Receiving a reply: AirlineProfileRS](#)
  - [AirlineProfile](#)
    - [AirlineProfileDataItem](#)
    - [ProfileOwner](#)
- [Errors](#)
- [Examples](#)
  - [AirlineProfileRQ only with Airline Code](#)
  - [AirlineProfileRS](#)
- [Legal disclaimer](#)

## Interface Overview

### Description

With airline profile, airlines can communicate the routes flights for which they are willing to respond to an NDC shopping request.

The airline profile enables airlines to reduce the volume of messages they are requested to process by filtering out irrelevant requests.

The goal is to help airline to predict their shopping traffic costs and protect against unneeded traffic.

With airline profile, aggregators can use an airline profile, maintained by a Profile Distributor, to determine which airlines to send an Offer request to.

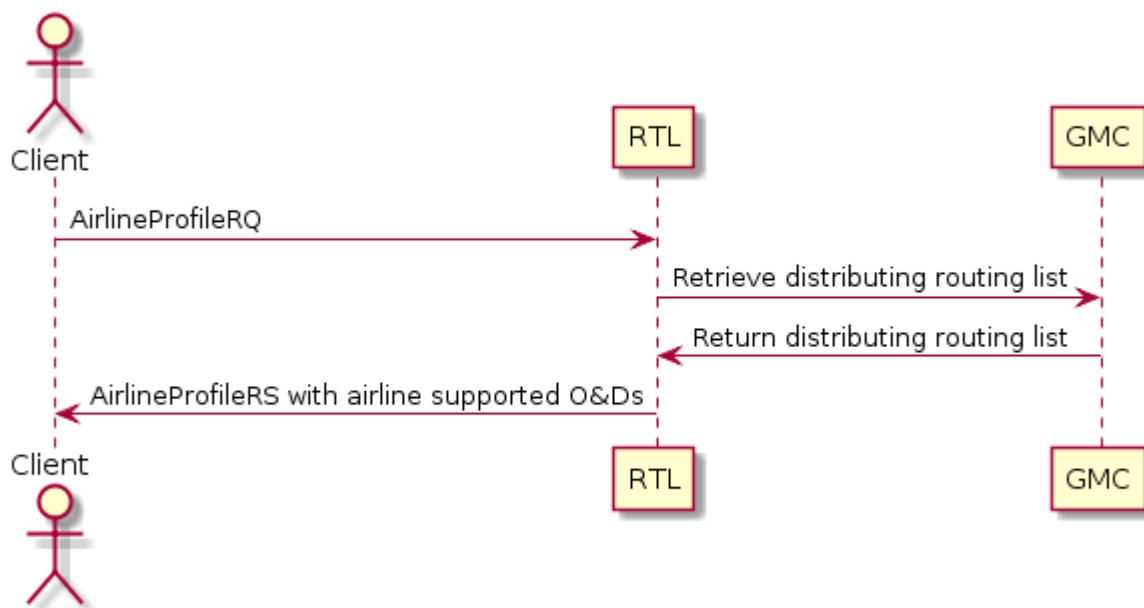
## Current Scope

AirlineProfile webservice allows to access the list of origin and destination supported by the airline.

## Out of scope

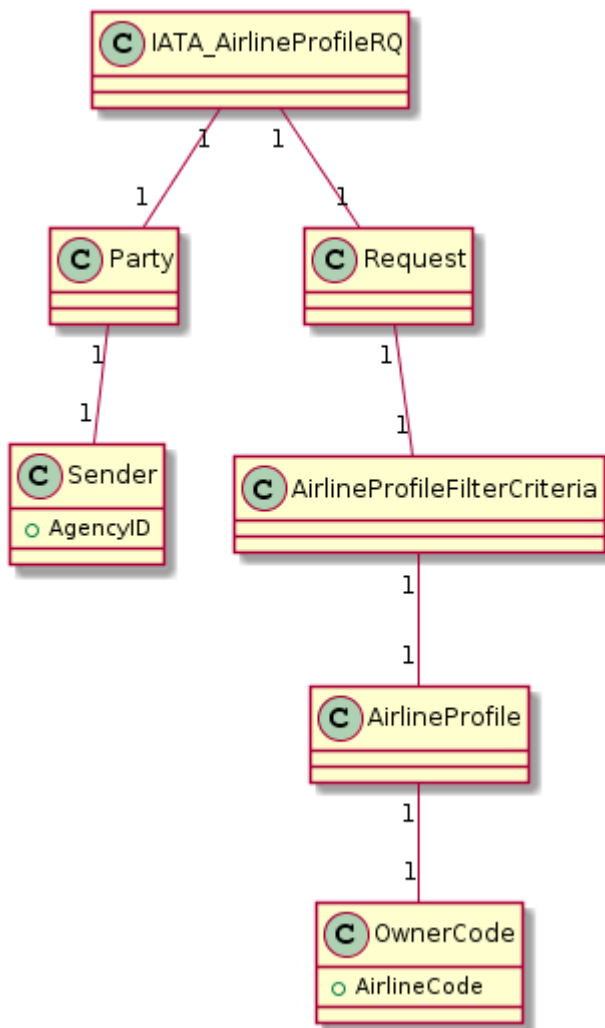
It is not possible to call the service for a subset of origins and destinations.

## Sequence Diagram



## Building a query: AirlineProfileRQ

This section describes the implementation of the input message based on the **NDC schema version 20.2**. Class diagram describing the *AirlineProfileRQ* xml:



## Point of sale

The POS structure describe the country code as well as the device used to perform the booking / payment. This part is described in NDC configuration implementation guide.

Designation	Repetition	Status	Location	Comments
Country Code	1	M	POS/Country/Country Code	Country code from where the message is sent

## Party

NDC Message/ Transaction Party(s) information. This part is described in NDC configuration implementation guide.

## Request

The following data has to be provided in input of the service:

Designation	Repetition	Status	Location	Comments
Airline code	1	M	Request/AirlineProfileFilterCriteria/AirlineProfile/OwnerCode	

Example:

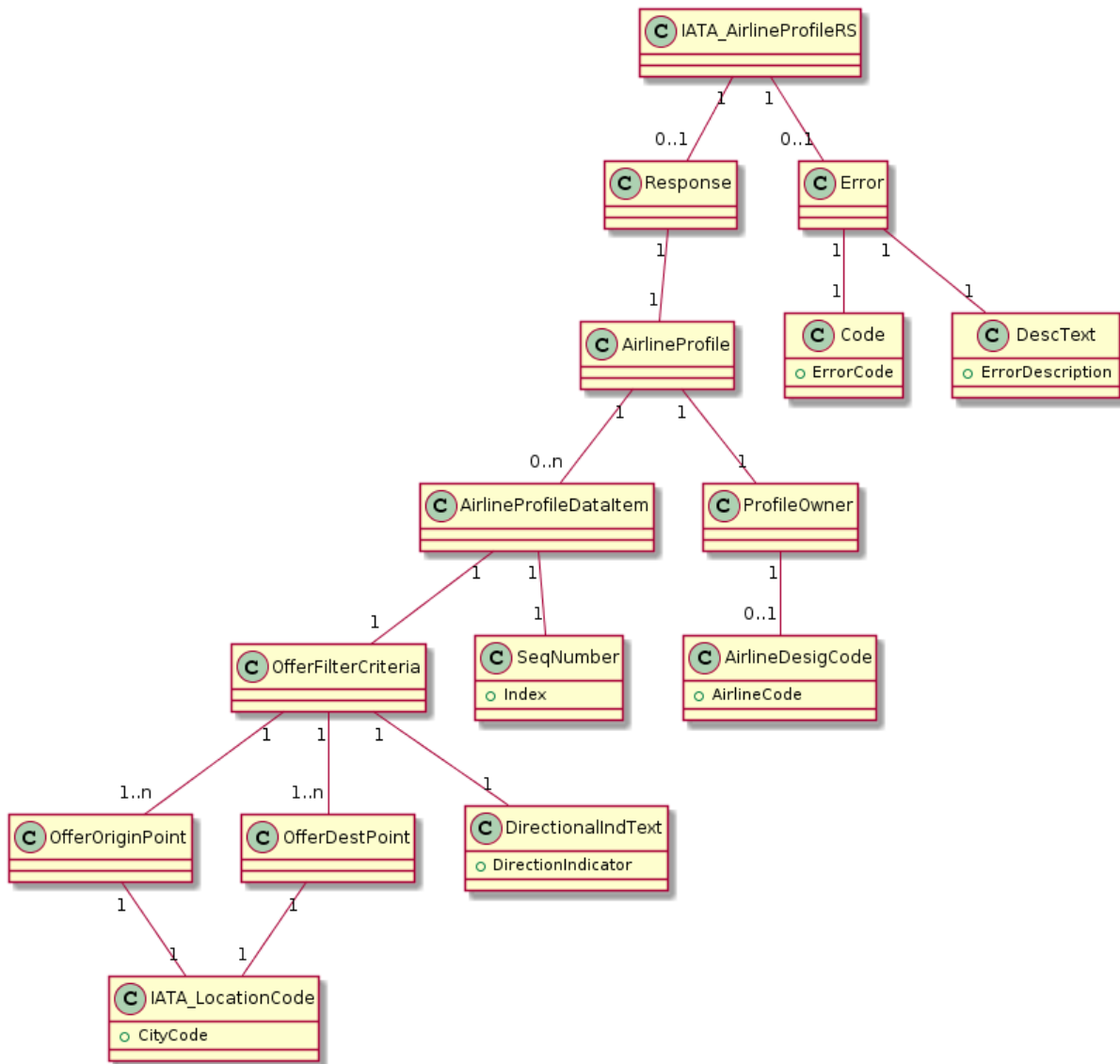
```

<Request>
  <AirlineProfileFilterCriteria>
    <AirlineProfile>
      <OwnerCode>6X</OwnerCode>
    </AirlineProfile>
  </AirlineProfileFilterCriteria>
</Request>

```

## Receiving a reply: AirlineProfileRS

This section describes the implementation of the input message based on the NDC schema version 20.2.



## AirlineProfile

### AirlineProfileDataItem

This field indicates if transaction is successfully completed.

Designation	Repetition	Status	Location	Comments
Profile item	0..n	O	IATA_AirlineProfileRS/Response/AirlineProfile/AirlineProfileDataItem	
Origin city code	1..n	M	#/OfferFilterCriteria/OfferOriginPoint/IATA_LocationCode	City or airport code

Designation	Repetition	Status	Location	Comments
Destination city code	1..n	M	#/OfferFilterCriteria/OfferDestPoint/IATA_LocationCode	City or airport code
Direction indicator	1	M	#/OfferFilterCriteria/DirectionalIndText/DirectionalIndText	1 means one way, 3 means bidirectional
Index	1	M	#SeqNumber	Unique sequence number

## ProfileOwner

Designation	Repetition	Status	Location	Comments
Airline code	1	M	IATA_AirlineProfileRS/Response/ProfileOwner/AirlineDesignCode	

## Errors

If a blocking error occurs during the process, the error structure is returned in response:

Designation	Repetition	Status	Location	Comments
Error element	1	M	IATA_AirlineProfileRS/Error	
Error code	1	M	#/Error/Code	Error code
Error message	1	M	#/Error/DescText	Error message

### Example:

```
<ns2:IATA_AirlineProfileRS
xmlns:ns2="http://www.iata.org/IATA/2015/00/2020.2/IATA_AirlineProfileRS"
xmlns:ns3="http://www.iata.org/IATA/2015/00/2020.2/IATA_AirlineProfileRQ">
  <ns2:Error>
    <ns2:Code>308</ns2:Code>
    <ns2:DescText>INVALID REQUEST</ns2:DescText>
  </ns2:Error>
</ns2:IATA_AirlineProfileRS>
```

The following errors can be returned:

Error Code	Error Message	Description
308	INVALID REQUEST	Transaction rejected due to invalid input.
309	NO PROFILE FOUND MATCHING THIS SEARCH CRITERIA	The airline has not defined its profile.

## Examples

### AirlineProfileRQ only with Airline Code

```

<IATA_AirlineProfileRQ Version="20.2"
xmlns="http://www.iata.org/IATA/2015/00/2020.2/IATA_AirlineProfileRQ" >
  <Party>
    <Participant>
      <Aggregator>
        <AggregatorID>XXX</AggregatorID>
      </Aggregator>
    </Participant>
    <Recipient>
      <ORA>
        <AirlineDesigCode>6X</AirlineDesigCode>
      </ORA>
    </Recipient>
    <Sender>
      <TravelAgency>
        <AgencyID>02345792</AgencyID>
        <IATA_Number>12345678</IATA_Number>
      </TravelAgency>
    </Sender>
  </Party>
  <POS>
    <Country>
      <CountryCode>FR</CountryCode>
    </Country>
  </POS>
  <Request>
    <AirlineProfileFilterCriteria>
      <AirlineProfile>
        <OwnerCode>6X</OwnerCode>
      </AirlineProfile>
    </AirlineProfileFilterCriteria>
  </Request>
</IATA_AirlineProfileRQ>

```



## AirlineProfileRS

```

<IATA_AirlineProfileRS
xmlns="http://www.iata.org/IATA/2015/00/2020.2/IATA_AirlineProfileRS">
  <Response>
    <AirlineProfile>
      <AirlineProfileDataItem> ---> Item
        <OfferFilterCriteria>
          <OfferOriginPoint>
            <IATA_LocationCode>CDG</IATA_LocationCode> ---> List
of Origins
          </OfferOriginPoint>
        </OfferFilterCriteria>
        <OfferFilterCriteria>
          <OfferDestPoint>
            <IATA_LocationCode>NCE</IATA_LocationCode> ---> List
of Destinations
          </OfferDestPoint>
          <OfferDestPoint>
            <IATA_LocationCode>LON</IATA_LocationCode> ---> List
of Destinations
          </OfferDestPoint>
        </OfferFilterCriteria>
        <OfferFilterCriteria>
          <DirectionalIndText>
            <DirectionalIndText>1</DirectionalIndText> --->
Direction
          </DirectionalIndText>
        </OfferFilterCriteria>
        <SeqNumber>1</SeqNumber>
      </AirlineProfileDataItem>
      ....
    <ProfileOwner>
      <AirlineDesigCode>6X</AirlineDesigCode> ---> List Airline
    </ProfileOwner>
  </AirlineProfile>
</Response>
</IATA_AirlineProfileRS>

```

## Legal disclaimer

This document, including all information contained herein and any attached or related documents, is strictly confidential and proprietary information of Amadeus and its respective affiliates, subsidiaries, members, vendors and/or suppliers (the “Confidential Information”) and is being shared with you for the sole and exclusive purpose of providing a functional solution overview between the airline and NDC consumer as part of Amadeus Altéa NDC. This document is intended solely for information purposes. If you are not the intended recipient you are notified that disclosing, copying or distributing the contents of this document or

information is strictly prohibited. Any Amadeus intellectual property or other information contained in this document or relating to the solutions, any products or services described herein shall remain the sole and exclusive property of Amadeus or its licensees, as applicable. Nothing herein shall constitute a license, transfer or other grant of any rights in or to the information or intellectual property contained or referenced herein. Any solutions, products, services or company names that may be referred to in this presentation that are trademarks are herewith acknowledged. Any disputes in connection with the breach of the above provisions shall be governed by and construed in accordance with English law and is submitted to the exclusive jurisdiction of the courts of London. Any content within this document is subject to an agreement being entered into between the parties and will not be considered as binding until agreed and formalised by the parties under a definitive agreement.